

Mitofusin 1 Rabbit mAb

Catalog # AP77255

Product Information

Application	WB, FC, IP
Primary Accession	Q8IWA4
Reactivity	Human
Host	Rabbit
Clonality	Monoclonal Antibody
Isotype	IgG
Conjugate	Unconjugated
Immunogen	A synthesized peptide derived from human Mitofusin1
Purification	Affinity Chromatography
Calculated MW	84160

Additional Information

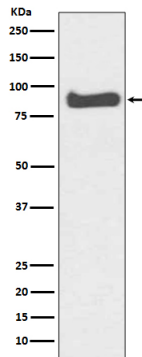
Gene ID	55669
Other Names	MFN1
Dilution	WB~~1/500-1/1000 FC~~1:10~50 IP~~N/A
Format	Liquid in 10mM PBS, pH 7.4, 150mM sodium chloride, 0.05% BSA, 0.02% sodium azide and 50% glycerol.
Storage	Store at 4°C short term. Aliquot and store at -20°C long term. Avoid freeze/thaw cycles.

Protein Information

Name	MFN1
Function	Mitochondrial outer membrane GTPase that mediates mitochondrial clustering and fusion (PubMed: 12475957 , PubMed: 12759376 , PubMed: 27920125 , PubMed: 28114303). Membrane clustering requires GTPase activity (PubMed: 27920125). It may involve a major rearrangement of the coiled coil domains (PubMed: 27920125 , PubMed: 28114303). Mitochondria are highly dynamic organelles, and their morphology is determined by the equilibrium between mitochondrial fusion and fission events (PubMed: 12475957 , PubMed: 12759376). Overexpression induces the formation of mitochondrial networks (in vitro) (PubMed: 12759376). Has low GTPase activity (PubMed: 27920125 , PubMed: 28114303).
Cellular Location	Mitochondrion outer membrane; Multi-pass membrane protein
Tissue Location	Detected in kidney and heart (at protein level) (PubMed: 12759376).

Ubiquitous (PubMed:11950885, PubMed:12759376) Expressed at slightly higher level in kidney and heart (PubMed:12759376). Isoform 2 may be overexpressed in some tumors, such as lung cancers (PubMed:11751411).

Images



Please note: All products are 'FOR RESEARCH USE ONLY. NOT FOR USE IN DIAGNOSTIC OR THERAPEUTIC PROCEDURES'.