

Hsp47 Rabbit mAb

Catalog # AP77267

Product Information

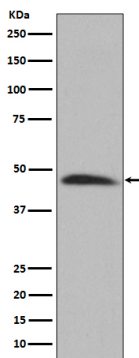
Application	WB, IHC-P
Primary Accession	P50454
Reactivity	Rat, Human, Mouse
Host	Rabbit
Clonality	Monoclonal Antibody
Isotype	IgG
Conjugate	Unconjugated
Immunogen	A synthesized peptide derived from human Hsp47
Purification	Affinity Chromatography
Calculated MW	46 KDa

Additional Information

Other Names	SERPINH1
Dilution	WB~~1/500-1/1000 IHC-P~~N/A
Format	Liquid in 10mM PBS, pH 7.4, 150mM sodium chloride, 0.05% BSA, 0.02% sodium azide and 50% glycerol.
Storage	Store at 4°C short term. Aliquot and store at -20°C long term. Avoid freeze/thaw cycles.

Protein Information

Images



Please note: All products are 'FOR RESEARCH USE ONLY. NOT FOR USE IN DIAGNOSTIC OR THERAPEUTIC PROCEDURES'.