

CDC42EP1 Rabbit mAb

Catalog # AP77271

Product Information

Application	WB
Primary Accession	Q00587
Reactivity	Human
Host	Rabbit
Clonality	Monoclonal Antibody
Isotype	IgG
Conjugate	Unconjugated
Immunogen	A synthesized peptide derived from human CDC42EP1
Purification	Affinity Chromatography
Calculated MW	40295

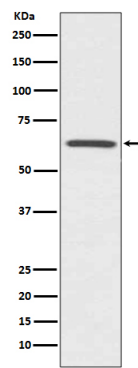
Additional Information

Gene ID	11135
Other Names	CDC42EP1
Dilution	WB~~1/500-1/1000
Format	Liquid in 10mM PBS, pH 7.4, 150mM sodium chloride, 0.05% BSA, 0.02% sodium azide and 50% glycerol.
Storage	Store at 4°C short term. Aliquot and store at -20°C long term. Avoid freeze/thaw cycles.

Protein Information

Name	CDC42EP1
Synonyms	BORG5, CEP1, MSE55
Function	Probably involved in the organization of the actin cytoskeleton. Induced membrane extensions in fibroblasts.
Cellular Location	Endomembrane system; Peripheral membrane protein. Cytoplasm, cytoskeleton
Tissue Location	Endothelial and bone marrow stromal cells.

Images



Please note: All products are 'FOR RESEARCH USE ONLY. NOT FOR USE IN DIAGNOSTIC OR THERAPEUTIC PROCEDURES'.