

CDC25C Rabbit mAb

Catalog # AP77274

Product Information

Application	WB, IHC-P, IF, FC, ICC, IP
Primary Accession	P30307
Reactivity	Human
Host	Rabbit
Clonality	Monoclonal Antibody
Isotype	IgG
Conjugate	Unconjugated
Immunogen	A synthesized peptide derived from human Cdc25C
Purification	Affinity Chromatography
Calculated MW	53365

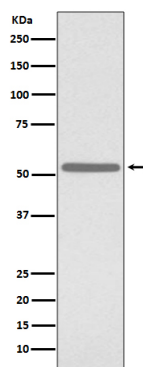
Additional Information

Gene ID	995
Other Names	CDC25C
Dilution	WB~~1/500-1/1000 IHC-P~~N/A IF~~1:50~200 FC~~1:10~50 ICC~~N/A IP~~N/A
Format	Liquid in 10mM PBS, pH 7.4, 150mM sodium chloride, 0.05% BSA, 0.02% sodium azide and 50% glycerol.
Storage	Store at 4°C short term. Aliquot and store at -20°C long term. Avoid freeze/thaw cycles.

Protein Information

Name	CDC25C
Function	Functions as a dosage-dependent inducer in mitotic control. Tyrosine protein phosphatase required for progression of the cell cycle (PubMed: 8119945). When phosphorylated, highly effective in activating G2 cells into prophase (PubMed: 8119945). Directly dephosphorylates CDK1 and activates its kinase activity (PubMed: 8119945).
Cellular Location	Nucleus

Images



Please note: All products are 'FOR RESEARCH USE ONLY. NOT FOR USE IN DIAGNOSTIC OR THERAPEUTIC PROCEDURES'.