

PAX6 Rabbit mAb

Catalog # AP77281

Product Information

Application	WB, IHC-P, IF, ICC
Primary Accession	P26367
Reactivity	Rat, Human, Mouse
Host	Rabbit
Clonality	Monoclonal Antibody
Isotype	IgG
Conjugate	Unconjugated
Immunogen	A synthesized peptide derived from human PAX6
Purification	Affinity Chromatography
Calculated MW	46683

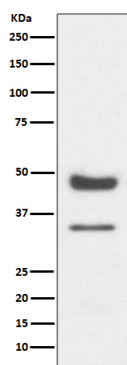
Additional Information

Gene ID	5080
Other Names	PAX6
Dilution	WB~~1/500-1/1000 IHC-P~~N/A IF~~1:50~200 ICC~~N/A
Format	Liquid in 10mM PBS, pH 7.4, 150mM sodium chloride, 0.05% BSA, 0.02% sodium azide and 50% glycerol.
Storage	Store at 4°C short term. Aliquot and store at -20°C long term. Avoid freeze/thaw cycles.

Protein Information

Name	PAX6
Synonyms	AN2
Function	Transcription factor with important functions in the development of the eye, nose, central nervous system and pancreas. Required for the differentiation of pancreatic islet alpha cells (By similarity). Competes with PAX4 in binding to a common element in the glucagon, insulin and somatostatin promoters. Regulates specification of the ventral neuron subtypes by establishing the correct progenitor domains (By similarity). Acts as a transcriptional repressor of NFATC1- mediated gene expression (By similarity).
Cellular Location	Nucleus {ECO:0000250 UniProtKB:P63015}. [Isoform 5a]: Nucleus {ECO:0000250 UniProtKB:P63016}
Tissue Location	[Isoform 1]: Expressed in lymphoblasts.

Images



Please note: All products are 'FOR RESEARCH USE ONLY. NOT FOR USE IN DIAGNOSTIC OR THERAPEUTIC PROCEDURES'.