

MMP11 Rabbit mAb

Catalog # AP77298

Product Information

Application	WB, IHC-P, IF, ICC
Primary Accession	P24347
Reactivity	Rat, Human, Mouse
Host	Rabbit
Clonality	Monoclonal Antibody
Isotype	IgG
Conjugate	Unconjugated
Immunogen	A synthesized peptide derived from human MMP11
Purification	Affinity Chromatography
Calculated MW	54590

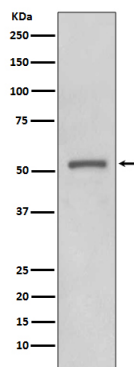
Additional Information

Gene ID	4320
Other Names	MMP11
Dilution	WB~~1/500-1/1000 IHC-P~~N/A IF~~1:50~200 ICC~~N/A
Format	Liquid in 10mM PBS, pH 7.4, 150mM sodium chloride, 0.05% BSA, 0.02% sodium azide and 50% glycerol.
Storage	Store at 4°C short term. Aliquot and store at -20°C long term. Avoid freeze/thaw cycles.

Protein Information

Name	MMP11
Synonyms	STMY3
Function	May play an important role in the progression of epithelial malignancies.
Cellular Location	Secreted, extracellular space, extracellular matrix
Tissue Location	Specifically expressed in stromal cells of breast carcinomas

Images



Please note: All products are 'FOR RESEARCH USE ONLY. NOT FOR USE IN DIAGNOSTIC OR THERAPEUTIC PROCEDURES'.