

# CD14 Rabbit mAb

Catalog # AP77307

## Product Information

---

<b>Application</b>	WB, IHC-P, IF, ICC
<b>Primary Accession</b>	<a href="#">P08571</a>
<b>Reactivity</b>	Human
<b>Host</b>	Rabbit
<b>Clonality</b>	Monoclonal Antibody
<b>Isotype</b>	IgG
<b>Conjugate</b>	Unconjugated
<b>Immunogen</b>	A synthesized peptide derived from human CD14
<b>Purification</b>	Affinity Chromatography
<b>Calculated MW</b>	40076

## Additional Information

---

<b>Gene ID</b>	929
<b>Other Names</b>	CD14
<b>Dilution</b>	WB~~1/500-1/1000 IHC-P~~N/A IF~~1/50-1/200 ICC~~N/A
<b>Format</b>	Liquid in 10mM PBS, pH 7.4, 150mM sodium chloride, 0.05% BSA, 0.02% sodium azide and 50% glycerol.
<b>Storage</b>	Store at 4°C short term. Aliquot and store at -20°C long term. Avoid freeze/thaw cycles.

## Protein Information

---

<b>Name</b>	CD14
<b>Function</b>	Coreceptor for bacterial lipopolysaccharide (PubMed: <a href="#">1698311</a> , PubMed: <a href="#">23264655</a> ). In concert with LBP, binds to monomeric lipopolysaccharide and delivers it to the LY96/TLR4 complex, thereby mediating the innate immune response to bacterial lipopolysaccharide (LPS) (PubMed: <a href="#">20133493</a> , PubMed: <a href="#">22265692</a> , PubMed: <a href="#">23264655</a> ). Acts via MyD88, TIRAP and TRAF6, leading to NF-kappa-B activation, cytokine secretion and the inflammatory response (PubMed: <a href="#">8612135</a> ). Acts as a coreceptor for TLR2:TLR6 heterodimer in response to diacylated lipopeptides and for TLR2:TLR1 heterodimer in response to triacylated lipopeptides, these clusters trigger signaling from the cell surface and subsequently are targeted to the Golgi in a lipid-raft dependent pathway (PubMed: <a href="#">16880211</a> ). Binds electronegative LDL (LDL(-)) and mediates the cytokine release induced by LDL(-) (PubMed: <a href="#">23880187</a> ).

**Cellular Location**

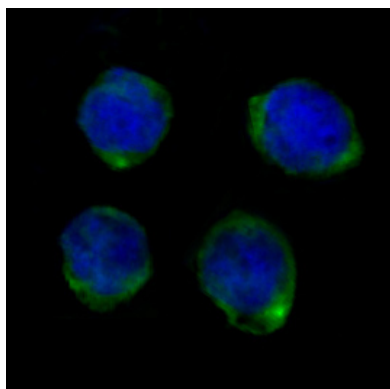
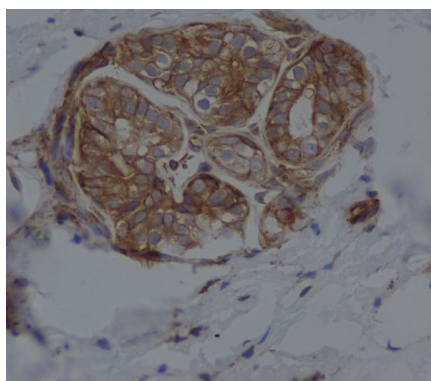
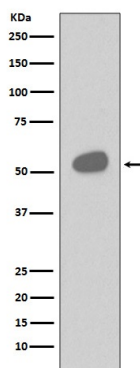
Cell membrane; Lipid-anchor, GPI-anchor. Secreted. Membrane raft. Golgi apparatus. Note=Secreted forms may arise by cleavage of the GPI anchor.

**Tissue Location**

Detected on macrophages (at protein level) (PubMed:1698311). Expressed strongly on the surface of monocytes and weakly on the surface of granulocytes; also expressed by most tissue macrophages.

**Images**

---



Please note: All products are 'FOR RESEARCH USE ONLY. NOT FOR USE IN DIAGNOSTIC OR THERAPEUTIC PROCEDURES'.