

# Collagen XVII alpha 1 Rabbit mAb

Catalog # AP77332

## Product Information

---

<b>Application</b>	WB, IHC-P, IF, ICC, IP
<b>Primary Accession</b>	<a href="#">Q9UMD9</a>
<b>Reactivity</b>	Rat, Human, Mouse
<b>Host</b>	Rabbit
<b>Clonality</b>	Monoclonal Antibody
<b>Isotype</b>	IgG
<b>Conjugate</b>	Unconjugated
<b>Immunogen</b>	A synthesized peptide derived from human Collagen XVII
<b>Purification</b>	Affinity Chromatography
<b>Calculated MW</b>	150419

## Additional Information

---

<b>Gene ID</b>	1308
<b>Other Names</b>	COL17A1
<b>Dilution</b>	WB~~1/500-1/1000 IHC-P~~N/A IF~~1/50-1/200 ICC~~N/A IP~~N/A
<b>Format</b>	Liquid in 10mM PBS, pH 7.4, 150mM sodium chloride, 0.05% BSA, 0.02% sodium azide and 50% glycerol.
<b>Storage</b>	Store at 4°C short term. Aliquot and store at -20°C long term. Avoid freeze/thaw cycles.

## Protein Information

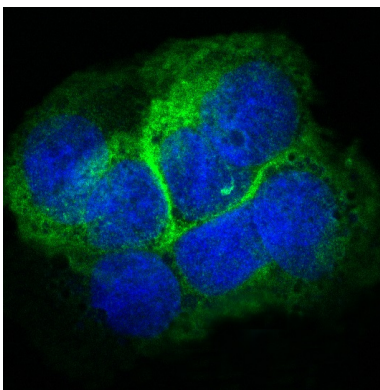
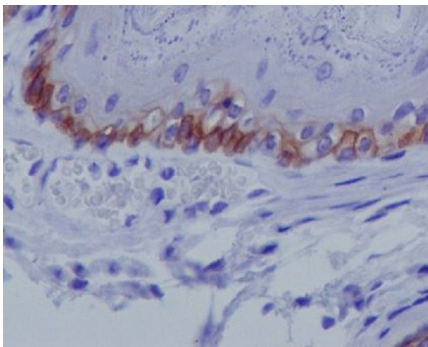
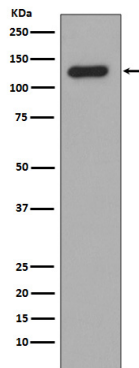
---

<b>Name</b>	COL17A1
<b>Synonyms</b>	BP180, BPAG2
<b>Function</b>	May play a role in the integrity of hemidesmosome and the attachment of basal keratinocytes to the underlying basement membrane.
<b>Cellular Location</b>	Cell junction, hemidesmosome. Membrane; Single- pass type II membrane protein. Note=Localized along the plasma membrane of the hemidesmosome [97 kDa linear IgA disease antigen]; Secreted, extracellular space, extracellular matrix, basement membrane Note=Localized in the lamina lucida beneath the hemidesmosomes
<b>Tissue Location</b>	Detected in skin (PubMed:8618013). In the cornea, it is detected in the epithelial basement membrane, the epithelial cells, and at a lower level in stromal cells (at protein level) (PubMed:25676728). Stratified squamous

epithelia. Found in hemidesmosomes. Expressed in cornea, oral mucosa, esophagus, intestine, kidney collecting ducts, ureter, bladder, urethra and thymus but is absent in lung, blood vessels, skeletal muscle and nerves

## Images

---



Please note: All products are 'FOR RESEARCH USE ONLY. NOT FOR USE IN DIAGNOSTIC OR THERAPEUTIC PROCEDURES'.