

Caspase 1 Rabbit mAb

Catalog # AP77342

Product Information

Application	WB, IHC-P
Primary Accession	P29466
Reactivity	Rat, Human
Host	Rabbit
Clonality	Monoclonal Antibody
Isotype	IgG
Conjugate	Unconjugated
Immunogen	A synthesized peptide derived from human Caspase-1
Purification	Affinity Chromatography
Calculated MW	45159

Additional Information

Gene ID	834
Other Names	CASP1
Dilution	WB~~1/500-1/1000 IHC-P~~N/A
Format	Liquid in 10mM PBS, pH 7.4, 150mM sodium chloride, 0.05% BSA, 0.02% sodium azide and 50% glycerol.
Storage	Store at 4°C short term. Aliquot and store at -20°C long term. Avoid freeze/thaw cycles.

Protein Information

Name	CASP1
Synonyms	IL1BC, IL1BCE
Function	Thiol protease involved in a variety of inflammatory processes by proteolytically cleaving other proteins, such as the precursors of the inflammatory cytokines interleukin-1 beta (IL1B) and interleukin 18 (IL18) as well as the pyroptosis inducer Gasdermin-D (GSDMD), into active mature peptides (PubMed: 15326478 , PubMed: 15498465 , PubMed: 1574116 , PubMed: 26375003 , PubMed: 32051255 , PubMed: 37993714 , PubMed: 7876192 , PubMed: 9334240). Plays a key role in cell immunity as an inflammatory response initiator: once activated through formation of an inflammasome complex, it initiates a pro-inflammatory response through the cleavage of the two inflammatory cytokines IL1B and IL18, releasing the mature cytokines which are involved in a variety of inflammatory processes (PubMed: 15326478 , PubMed: 15498465 , PubMed: 1574116 , PubMed: 32051255 , PubMed: 7876192).

Cleaves a tetrapeptide after an Asp residue at position P1 (PubMed:[15498465](#), PubMed:[1574116](#), PubMed:[7876192](#)). Also initiates pyroptosis, a programmed lytic cell death pathway, through cleavage of GSDMD (PubMed:[26375003](#)). In contrast to cleavage of interleukin IL1B, recognition and cleavage of GSDMD is not strictly dependent on the consensus cleavage site but depends on an exosite interface on CASP1 that recognizes and binds the Gasdermin-D, C-terminal (GSDMD-CT) part (PubMed:[32051255](#), PubMed:[32109412](#), PubMed:[32553275](#)). Cleaves and activates CASP7 in response to bacterial infection, promoting plasma membrane repair (PubMed:[22464733](#)). Upon inflammasome activation, during DNA virus infection but not RNA virus challenge, controls antiviral immunity through the cleavage of CGAS, rendering it inactive (PubMed:[28314590](#)). In apoptotic cells, cleaves SPHK2 which is released from cells and remains enzymatically active extracellularly (PubMed:[20197547](#)).

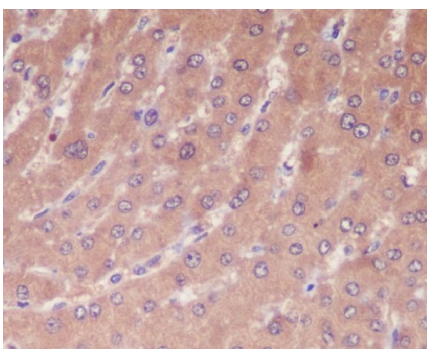
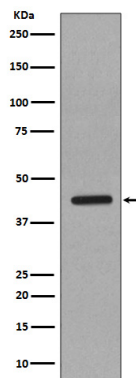
Cellular Location

Cytoplasm. Cell membrane

Tissue Location

Expressed in larger amounts in spleen and lung. Detected in liver, heart, small intestine, colon, thymus, prostate, skeletal muscle, peripheral blood leukocytes, kidney and testis. No expression in the brain.

Images



Please note: All products are 'FOR RESEARCH USE ONLY. NOT FOR USE IN DIAGNOSTIC OR THERAPEUTIC PROCEDURES'.