

MMP1 Rabbit mAb

Catalog # AP77350

Product Information

Application	WB, IHC-P, IF, FC, ICC
Primary Accession	P03956
Reactivity	Human
Host	Rabbit
Clonality	Monoclonal Antibody
Isotype	IgG
Conjugate	Unconjugated
Immunogen	A synthesized peptide derived from human MMP1
Purification	Affinity Chromatography
Calculated MW	54007

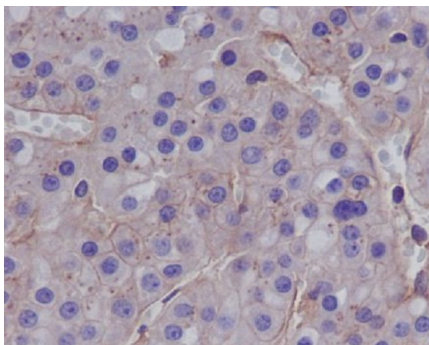
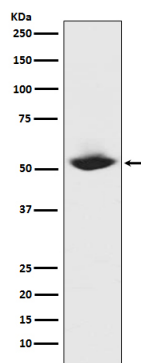
Additional Information

Gene ID	4312
Other Names	MMP1
Dilution	WB~~1/500-1/1000 IHC-P~~N/A IF~~1:50~200 FC~~1:10~50 ICC~~N/A
Format	Liquid in 10mM PBS, pH 7.4, 150mM sodium chloride, 0.05% BSA, 0.02% sodium azide and 50% glycerol.
Storage	Store at 4°C short term. Aliquot and store at -20°C long term. Avoid freeze/thaw cycles.

Protein Information

Name	MMP1
Synonyms	CLG
Function	Cleaves collagens of types I, II, and III at one site in the helical domain. Also cleaves collagens of types VII and X (PubMed: 1645757 , PubMed: 2153297 , PubMed: 2557822). In case of HIV infection, interacts and cleaves the secreted viral Tat protein, leading to a decrease in neuronal Tat's mediated neurotoxicity (PubMed: 16807369).
Cellular Location	Secreted, extracellular space, extracellular matrix

Images



Please note: All products are 'FOR RESEARCH USE ONLY. NOT FOR USE IN DIAGNOSTIC OR THERAPEUTIC PROCEDURES'.