

# ERG Rabbit mAb

Catalog # AP77377

## Product Information

---

<b>Application</b>	WB, IHC-P, ICC
<b>Primary Accession</b>	<a href="#">P11308</a>
<b>Reactivity</b>	Human, Mouse, Rat
<b>Host</b>	Rabbit
<b>Clonality</b>	Monoclonal Antibody
<b>Calculated MW</b>	53838

## Additional Information

---

<b>Gene ID</b>	2078
<b>Other Names</b>	ERG
<b>Dilution</b>	WB~~1/500-1/1000 IHC-P~~N/A ICC~~N/A
<b>Format</b>	10mM PBS, pH 7.4, 150mM sodium chloride, 0.05% BSA, 0.02% sodium azide and 50% glycerol.
<b>Storage</b>	Store at 4°C short term. Aliquot and store at -20°C long term. Avoid freeze/thaw cycles.

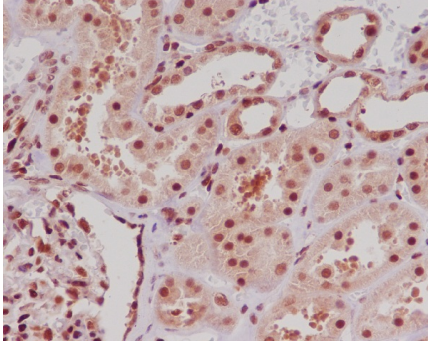
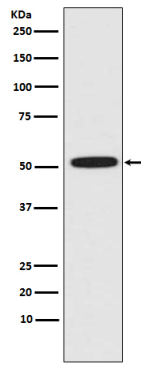
## Protein Information

---

<b>Name</b>	ERG
<b>Function</b>	Transcriptional regulator. May participate in transcriptional regulation through the recruitment of SETDB1 histone methyltransferase and subsequent modification of local chromatin structure.
<b>Cellular Location</b>	Nucleus {ECO:0000255 PROSITE-ProRule:PRU00237, ECO:0000269 PubMed:17289661}. Cytoplasm Note=Localized in cytoplasmic mRNP granules containing untranslated mRNAs

## Images

---



Please note: All products are 'FOR RESEARCH USE ONLY. NOT FOR USE IN DIAGNOSTIC OR THERAPEUTIC PROCEDURES'.