

Cubilin Rabbit mAb

Catalog # AP77388

Product Information

Application	WB, IHC-P
Primary Accession	O60494
Reactivity	Human
Host	Rabbit
Clonality	Monoclonal Antibody
Isotype	IgG
Conjugate	Unconjugated
Immunogen	A synthesized peptide derived from human Cubilin
Purification	Affinity Chromatography
Calculated MW	398736

Additional Information

Gene ID	8029
Other Names	CUBN
Dilution	WB~~1/500-1/1000 IHC-P~~N/A
Format	Liquid in 10mM PBS, pH 7.4, 150mM sodium chloride, 0.05% BSA, 0.02% sodium azide and 50% glycerol.
Storage	Store at 4°C short term. Aliquot and store at -20°C long term. Avoid freeze/thaw cycles.

Protein Information

Name	CUBN
Synonyms	IFCR
Function	Endocytic receptor which plays a role in lipoprotein, vitamin and iron metabolism by facilitating their uptake (PubMed: 10371504 , PubMed: 11606717 , PubMed: 11717447 , PubMed: 14576052 , PubMed: 9572993). Acts together with LRP2 to mediate endocytosis of high-density lipoproteins, GC, hemoglobin, ALB, TF and SCGB1A1. Acts together with AMN to mediate endocytosis of the CBLIF-cobalamin complex (PubMed: 14576052 , PubMed: 9572993). Binds to ALB, MB, Kappa and lambda-light chains, TF, hemoglobin, GC, SCGB1A1, APOA1, high density lipoprotein, and the CBLIF-cobalamin complex. Ligand binding requires calcium (PubMed: 9572993). Serves as important transporter in several absorptive epithelia, including intestine, renal proximal tubules and embryonic yolk sac. May play an important role in the development of the peri-implantation

embryo through internalization of APOA1 and cholesterol. Binds to LGALS3 at the maternal-fetal interface.

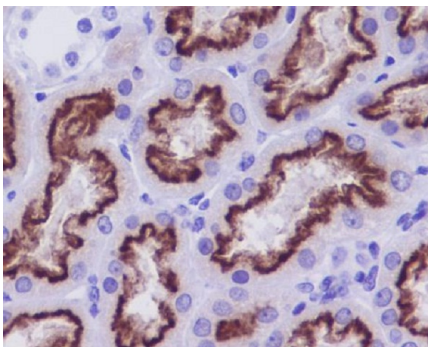
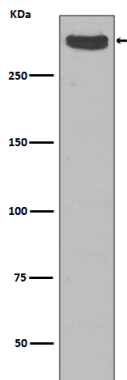
Cellular Location

Apical cell membrane {ECO:0000250 | UniProtKB:Q9JLB4}; Peripheral membrane protein. Cell membrane; Peripheral membrane protein {ECO:0000305, ECO:0000305 | PubMed:30523278}. Membrane, coated pit. Endosome. Lysosome membrane {ECO:0000250 | UniProtKB:O70244}; Peripheral membrane protein. Note=Lacks a transmembrane domain and depends on interaction with AMN for location at the plasma membrane (PubMed:29402915, PubMed:30523278). Colocalizes with AMN and LRP2 in the endocytotic apparatus of epithelial cells (By similarity) {ECO:0000250 | UniProtKB:O70244, ECO:0000269 | PubMed:29402915, ECO:0000269 | PubMed:30523278}

Tissue Location

Detected in kidney cortex (at protein level) (PubMed:9572993). Expressed in kidney proximal tubule cells, placenta, visceral yolk-sac cells and in absorptive intestinal cells. Expressed in the epithelium of intestine and kidney

Images



Please note: All products are 'FOR RESEARCH USE ONLY. NOT FOR USE IN DIAGNOSTIC OR THERAPEUTIC PROCEDURES'.