

Filamin A Rabbit mAb

Catalog # AP77421

Product Information

Application	WB, IHC-P, IF, FC, ICC
Primary Accession	P21333
Reactivity	Rat, Human, Mouse
Host	Rabbit
Clonality	Monoclonal Antibody
Isotype	IgG
Conjugate	Unconjugated
Immunogen	A synthesized peptide derived from human Filamin A
Purification	Affinity Chromatography
Calculated MW	280739

Additional Information

Gene ID	2316
Other Names	FLNA
Dilution	WB~~1/500-1/1000 IHC-P~~N/A IF~~1:50~200 FC~~1:10~50 ICC~~N/A
Format	Liquid in 10mM PBS, pH 7.4, 150mM sodium chloride, 0.05% BSA, 0.02% sodium azide and 50% glycerol.
Storage	Store at 4°C short term. Aliquot and store at -20°C long term. Avoid freeze/thaw cycles.

Protein Information

Name	FLNA
Synonyms	FLN, FLN1
Function	Promotes orthogonal branching of actin filaments and links actin filaments to membrane glycoproteins. Anchors various transmembrane proteins to the actin cytoskeleton and serves as a scaffold for a wide range of cytoplasmic signaling proteins. Interaction with FLNB may allow neuroblast migration from the ventricular zone into the cortical plate. Tethers cell surface- localized furin, modulates its rate of internalization and directs its intracellular trafficking (By similarity). Involved in ciliogenesis. Plays a role in cell-cell contacts and adherens junctions during the development of blood vessels, heart and brain organs. Plays a role in platelets morphology through interaction with SYK that regulates ITAM- and ITAM-like-containing receptor signaling, resulting in by platelet cytoskeleton organization maintenance (By similarity). During the axon guidance process, required for growth cone

collapse induced by SEMA3A-mediated stimulation of neurons (PubMed:[25358863](#)).

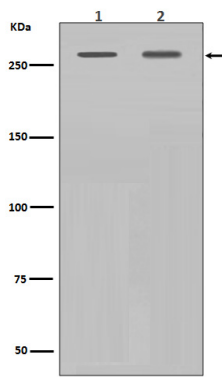
Cellular Location

Cytoplasm, cell cortex. Cytoplasm, cytoskeleton {ECO:0000250|UniProtKB:Q8BTM8}. Perikaryon {ECO:0000250|UniProtKB:Q8BTM8}. Cell projection, growth cone {ECO:0000250|UniProtKB:Q8BTM8}. Cell projection, podosome {ECO:0000250|UniProtKB:Q8BTM8}. Note=Colocalizes with CPMR1 in the central region of DRG neuron growth cone (By similarity). Following SEMA3A stimulation of DRG neurons, colocalizes with F-actin (By similarity). Localized to the core of myotube podosomes (By similarity). {ECO:0000250|UniProtKB:Q8BTM8}

Tissue Location

Ubiquitous.

Images



Please note: All products are 'FOR RESEARCH USE ONLY. NOT FOR USE IN DIAGNOSTIC OR THERAPEUTIC PROCEDURES'.