

# Integrin alpha X Rabbit mAb

Catalog # AP77431

## Product Information

---

<b>Application</b>	WB, IHC-P, IF, ICC, IP
<b>Primary Accession</b>	<a href="#">P20702</a>
<b>Reactivity</b>	Human
<b>Host</b>	Rabbit
<b>Clonality</b>	Monoclonal Antibody
<b>Isotype</b>	IgG
<b>Conjugate</b>	Unconjugated
<b>Immunogen</b>	A synthesized peptide derived from human CD11c
<b>Purification</b>	Affinity Chromatography
<b>Calculated MW</b>	127829

## Additional Information

---

<b>Gene ID</b>	3687
<b>Other Names</b>	ITGAX
<b>Dilution</b>	WB~~1/500-1/1000 IHC-P~~N/A IF~~1:50~200 ICC~~N/A IP~~N/A
<b>Format</b>	Liquid in 10mM PBS, pH 7.4, 150mM sodium chloride, 0.05% BSA, 0.02% sodium azide and 50% glycerol.
<b>Storage</b>	Store at 4°C short term. Aliquot and store at -20°C long term. Avoid freeze/thaw cycles.

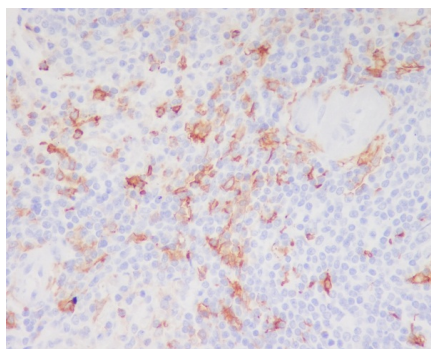
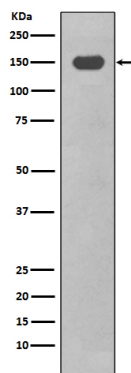
## Protein Information

---

<b>Name</b>	ITGAX ( <a href="#">HGNC:6152</a> )
<b>Synonyms</b>	CD11C
<b>Function</b>	Integrin alpha-X/beta-2 is a receptor for fibrinogen. It recognizes the sequence G-P-R in fibrinogen. It mediates cell-cell interaction during inflammatory responses. It is especially important in monocyte adhesion and chemotaxis. Functions as a receptor of the erythrocyte-specific adhesion molecule ICAM4 and mediates erythrophagocytosis (PubMed: <a href="#">16985175</a> ).
<b>Cellular Location</b>	Cell membrane; Single-pass type I membrane protein
<b>Tissue Location</b>	Predominantly expressed in monocytes and granulocytes

## Images

---



Please note: All products are 'FOR RESEARCH USE ONLY. NOT FOR USE IN DIAGNOSTIC OR THERAPEUTIC PROCEDURES'.