

Flotillin 1 Rabbit mAb

Catalog # AP77437

Product Information

Application	WB
Primary Accession	O75955
Reactivity	Human, Mouse
Host	Rabbit
Clonality	Monoclonal Antibody
Isotype	IgG
Conjugate	Unconjugated
Immunogen	A synthesized peptide derived from human Flotillin 1
Purification	Affinity Chromatography
Calculated MW	47355

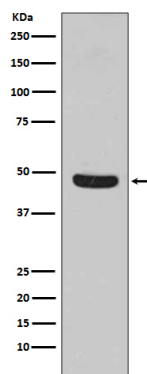
Additional Information

Gene ID	10211
Other Names	FLOT1
Dilution	WB~~1/500-1/1000
Format	Liquid in 10mM PBS, pH 7.4, 150mM sodium chloride, 0.05% BSA, 0.02% sodium azide and 50% glycerol.
Storage	Store at 4°C short term. Aliquot and store at -20°C long term. Avoid freeze/thaw cycles.

Protein Information

Name	FLOT1
Function	May act as a scaffolding protein within caveolar membranes, functionally participating in formation of caveolae or caveolae-like vesicles.
Cellular Location	Cell membrane; Peripheral membrane protein. Endosome Membrane, caveola {ECO:0000250 UniProtKB:O08917}; Peripheral membrane protein {ECO:0000250 UniProtKB:O08917}. Melanosome. Membrane raft. Note=Identified by mass spectrometry in melanosome fractions from stage I to stage IV (PubMed:17081065) Membrane-associated protein of caveola (By similarity) {ECO:0000250 UniProtKB:O08917, ECO:0000269 PubMed:17081065}

Images



Please note: All products are 'FOR RESEARCH USE ONLY. NOT FOR USE IN DIAGNOSTIC OR THERAPEUTIC PROCEDURES'.