

alpha/beta Synuclein Rabbit mAb

Catalog # AP77455

Product Information

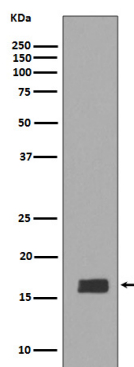
| | |
|-------------------|---|
| Application | WB, IF, FC, ICC |
| Primary Accession | P37840/Q16143 |
| Reactivity | Rat, Human, Mouse |
| Host | Rabbit |
| Clonality | Monoclonal Antibody |
| Isotype | IgG |
| Conjugate | Unconjugated |
| Immunogen | A synthesized peptide derived from human alpha + beta Synuclein |
| Purification | Affinity Chromatography |
| Calculated MW | 14 KDa |

Additional Information

| | |
|-------------|--|
| Other Names | SNCA/SNCB |
| Dilution | WB~~1/500-1/1000 IF~~1:50~200 FC~~1:10~50 ICC~~N/A |
| Format | Liquid in 10mM PBS, pH 7.4, 150mM sodium chloride, 0.05% BSA, 0.02% sodium azide and 50% glycerol. |
| Storage | Store at 4°C short term. Aliquot and store at -20°C long term. Avoid freeze/thaw cycles. |

Protein Information

Images



Please note: All products are 'FOR RESEARCH USE ONLY. NOT FOR USE IN DIAGNOSTIC OR THERAPEUTIC PROCEDURES'.