

ALAS1 Rabbit mAb

Catalog # AP77471

Product Information

Application	WB, IF, ICC
Primary Accession	P13196
Reactivity	Human
Host	Rabbit
Clonality	Monoclonal Antibody
Isotype	IgG
Conjugate	Unconjugated
Immunogen	A synthesized peptide derived from human Alas1
Purification	Affinity Chromatography
Calculated MW	70581

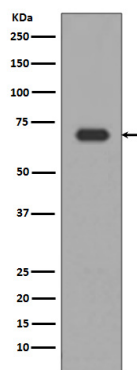
Additional Information

Gene ID	211
Other Names	ALAS1
Dilution	WB~~1/500-1/1000 IF~~1:50~200 ICC~~N/A
Format	Liquid in 10mM PBS, pH 7.4, 150mM sodium chloride, 0.05% BSA, 0.02% sodium azide and 50% glycerol.
Storage	Store at 4°C short term. Aliquot and store at -20°C long term. Avoid freeze/thaw cycles.

Protein Information

Name	ALAS1
Synonyms	ALAS3, ALASH
Function	Catalyzes the pyridoxal 5'-phosphate (PLP)-dependent condensation of succinyl-CoA and glycine to form aminolevulinic acid (ALA), with CoA and CO ₂ as by-products.
Cellular Location	Mitochondrion inner membrane {ECO:0000250 UniProtKB:P22557}; Peripheral membrane protein {ECO:0000250 UniProtKB:P22557}. Note=Localizes to the matrix side of the mitochondrion inner membrane. {ECO:0000250 UniProtKB:P22557}

Images



Please note: All products are 'FOR RESEARCH USE ONLY. NOT FOR USE IN DIAGNOSTIC OR THERAPEUTIC PROCEDURES'.