

# MMP8 Rabbit mAb

Catalog # AP77477

## Product Information

---

<b>Application</b>	WB, IHC-P, IF, FC, ICC, IP
<b>Primary Accession</b>	<a href="#">P22894</a>
<b>Reactivity</b>	Rat, Human, Mouse
<b>Host</b>	Rabbit
<b>Clonality</b>	Monoclonal Antibody
<b>Isotype</b>	IgG
<b>Conjugate</b>	Unconjugated
<b>Immunogen</b>	A synthesized peptide derived from human MMP8
<b>Purification</b>	Affinity Chromatography
<b>Calculated MW</b>	53412

## Additional Information

---

<b>Gene ID</b>	4317
<b>Other Names</b>	MMP8
<b>Dilution</b>	WB~~1/500-1/1000 IHC-P~~N/A IF~~1:50~200 FC~~1:10~50 ICC~~N/A IP~~N/A
<b>Format</b>	Liquid in 10mM PBS, pH 7.4, 150mM sodium chloride, 0.05% BSA, 0.02% sodium azide and 50% glycerol.
<b>Storage</b>	Store at 4°C short term. Aliquot and store at -20°C long term. Avoid freeze/thaw cycles.

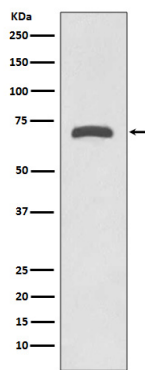
## Protein Information

---

<b>Name</b>	MMP8
<b>Synonyms</b>	CLG1
<b>Function</b>	Can degrade fibrillar type I, II, and III collagens.
<b>Cellular Location</b>	Cytoplasmic granule. Secreted, extracellular space, extracellular matrix. Note=Stored in intracellular granules
<b>Tissue Location</b>	Neutrophils.

## Images

---



Please note: All products are 'FOR RESEARCH USE ONLY. NOT FOR USE IN DIAGNOSTIC OR THERAPEUTIC PROCEDURES'.