

Integrin alpha L Rabbit mAb

Catalog # AP77486

Product Information

Application	WB, IHC-P, IF, FC, ICC, IP
Primary Accession	P20701
Reactivity	Human
Host	Rabbit
Clonality	Monoclonal Antibody
Isotype	IgG
Conjugate	Unconjugated
Immunogen	A synthesized peptide derived from human CD11a
Purification	Affinity Chromatography
Calculated MW	128770

Additional Information

Gene ID	3683
Other Names	ITGAL
Dilution	WB~~1/500-1/1000 IHC-P~~N/A IF~~1:50~200 FC~~1:10~50 ICC~~N/A IP~~N/A
Format	Liquid in 10mM PBS, pH 7.4, 150mM sodium chloride, 0.05% BSA, 0.02% sodium azide and 50% glycerol.
Storage	Store at 4°C short term. Aliquot and store at -20°C long term. Avoid freeze/thaw cycles.

Protein Information

Name	ITGAL (HGNC:6148)
Function	Integrin ITGAL/ITGB2 is a receptor for ICAM1, ICAM2, ICAM3 and ICAM4 (PubMed: 10846180 , PubMed: 12526797 , PubMed: 1676048 , PubMed: 3086451). Integrin ITGAL/ITGB2 is a receptor for F11R (PubMed: 11812992 , PubMed: 15528364). Integrin ITGAL/ITGB2 is a receptor for the secreted form of ubiquitin-like protein ISG15; the interaction is mediated by ITGAL (PubMed: 29100055). Involved in a variety of immune phenomena including leukocyte-endothelial cell interaction, cytotoxic T-cell mediated killing, and antibody dependent killing by granulocytes and monocytes. Contributes to natural killer cell cytotoxicity (PubMed: 15356110). Involved in leukocyte adhesion and transmigration of leukocytes including T-cells and neutrophils (PubMed: 11812992). Acts as a platform at the immunological synapse to translate TCR engagement and density of the ITGAL ligand ICAM1 into graded adhesion (PubMed: 38195629). Required for generation of common lymphoid

progenitor cells in bone marrow, indicating a role in lymphopoiesis (By similarity). Integrin ITGAL/ITGB2 in association with ICAM3, contributes to apoptotic neutrophil phagocytosis by macrophages (PubMed:[23775590](#)). Integrins ITGAL:ITGB2 functions as a receptor of the neuron-specific adhesion molecule ICAM5 ensuring neuron cell-leukocyte adhesion (PubMed:[10741396](#)). Integrin ITGAL/ITGB2 that functions as a signaling receptor of ICAM2, ensuring leukocyte cell-cell adhesion on resting cells (PubMed:[1676048](#)).

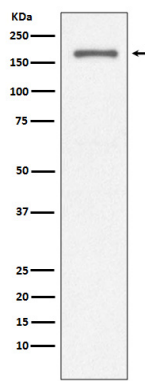
Cellular Location

Cell membrane; Single-pass type I membrane protein. Membrane raft. Note=Upon antigen recognition by the TCR, is recruited to lipid rafts (PubMed:15684041).

Tissue Location

Leukocytes.

Images



Please note: All products are 'FOR RESEARCH USE ONLY. NOT FOR USE IN DIAGNOSTIC OR THERAPEUTIC PROCEDURES'.