

# BPI Rabbit mAb

Catalog # AP77509

## Product Information

---

<b>Application</b>	WB, IF, FC, ICC
<b>Primary Accession</b>	<a href="#">P17213</a>
<b>Reactivity</b>	Human
<b>Host</b>	Rabbit
<b>Clonality</b>	Monoclonal Antibody
<b>Isotype</b>	IgG
<b>Conjugate</b>	Unconjugated
<b>Immunogen</b>	A synthesized peptide derived from human BPI
<b>Purification</b>	Affinity Chromatography
<b>Calculated MW</b>	53900

## Additional Information

---

<b>Gene ID</b>	671
<b>Other Names</b>	BPI
<b>Dilution</b>	WB~~1/500-1/1000 IF~~1:50~200 FC~~1:10~50 ICC~~N/A
<b>Format</b>	Liquid in 10mM PBS, pH 7.4, 150mM sodium chloride, 0.05% BSA, 0.02% sodium azide and 50% glycerol.
<b>Storage</b>	Store at 4°C short term. Aliquot and store at -20°C long term. Avoid freeze/thaw cycles.

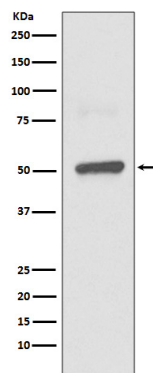
## Protein Information

---

<b>Name</b>	BPI
<b>Function</b>	The cytotoxic action of BPI is limited to many species of Gram-negative bacteria; this specificity may be explained by a strong affinity of the very basic N-terminal half for the negatively charged lipopolysaccharides that are unique to the Gram-negative bacterial outer envelope. Has antibacterial activity against the Gram-negative bacterium <i>P.aeruginosa</i> , this activity is inhibited by LPS from <i>P.aeruginosa</i> .
<b>Cellular Location</b>	Secreted. Cytoplasmic granule membrane Note=Membrane-associated in polymorphonuclear Leukocytes (PMN) granules.
<b>Tissue Location</b>	Restricted to cells of the myeloid series.

## Images

---



Please note: All products are 'FOR RESEARCH USE ONLY. NOT FOR USE IN DIAGNOSTIC OR THERAPEUTIC PROCEDURES'.