

Annexin A10 Rabbit mAb

Catalog # AP77510

Product Information

Application	WB
Primary Accession	Q9UJ72
Reactivity	Rat, Human, Mouse
Host	Rabbit
Clonality	Monoclonal Antibody
Isotype	IgG
Conjugate	Unconjugated
Immunogen	A synthesized peptide derived from human Annexin A10
Purification	Affinity Chromatography
Calculated MW	37278

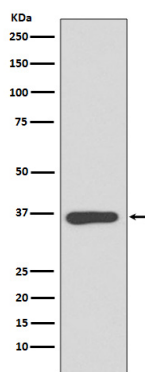
Additional Information

Gene ID	11199
Other Names	ANXA10
Dilution	WB~~1/500-1/1000
Format	Liquid in 10mM PBS, pH 7.4, 150mM sodium chloride, 0.05% BSA, 0.02% sodium azide and 50% glycerol.
Storage	Store at 4°C short term. Aliquot and store at -20°C long term. Avoid freeze/thaw cycles.

Protein Information

Name	ANXA10
Synonyms	ANX14

Images



Please note: All products are 'FOR RESEARCH USE ONLY. NOT FOR USE IN DIAGNOSTIC OR THERAPEUTIC PROCEDURES'.