

# NSD3 Rabbit mAb

Catalog # AP77512

## Product Information

---

<b>Application</b>	WB, FC
<b>Primary Accession</b>	<a href="#">Q9BZ95</a>
<b>Reactivity</b>	Rat, Human, Mouse
<b>Host</b>	Rabbit
<b>Clonality</b>	Monoclonal Antibody
<b>Isotype</b>	IgG
<b>Conjugate</b>	Unconjugated
<b>Immunogen</b>	A synthesized peptide derived from human NSD3
<b>Purification</b>	Affinity Chromatography
<b>Calculated MW</b>	161613

## Additional Information

---

<b>Gene ID</b>	54904
<b>Other Names</b>	NSD3
<b>Dilution</b>	WB~~1/500-1/1000 FC~~1:10~50
<b>Format</b>	Liquid in 10mM PBS, pH 7.4, 150mM sodium chloride, 0.05% BSA, 0.02% sodium azide and 50% glycerol.
<b>Storage</b>	Store at 4°C short term. Aliquot and store at -20°C long term. Avoid freeze/thaw cycles.

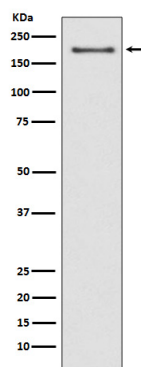
## Protein Information

---

<b>Name</b>	NSD3 ( <a href="#">HGNC:12767</a> )
<b>Synonyms</b>	WHSC1L1
<b>Function</b>	Histone methyltransferase. Preferentially dimethylates 'Lys- 4' and 'Lys-27' of histone H3 forming H3K4me2 and H3K27me2. H3 'Lys-4' methylation represents a specific tag for epigenetic transcriptional activation, while 'Lys-27' is a mark for transcriptional repression.
<b>Cellular Location</b>	Nucleus. Chromosome.
<b>Tissue Location</b>	Highly expressed in brain, heart and skeletal muscle. Expressed at lower level in liver and lung

## Images

---



Please note: All products are 'FOR RESEARCH USE ONLY. NOT FOR USE IN DIAGNOSTIC OR THERAPEUTIC PROCEDURES'.