

# Bcl10 Rabbit mAb

Catalog # AP77531

## Product Information

Application	WB, IHC-P, IF, ICC, IP
Primary Accession	<a href="#">O95999</a>
Reactivity	Human
Host	Rabbit
Clonality	Monoclonal Antibody
Isotype	IgG
Conjugate	Unconjugated
Immunogen	A synthesized peptide derived from human Bcl10
Purification	Affinity Chromatography
Calculated MW	26252

## Additional Information

Gene ID	8915
Other Names	BCL10
Dilution	WB~~1/500-1/1000 IHC-P~~N/A IF~~1:50~200 ICC~~N/A IP~~N/A
Format	Liquid in 10mM PBS, pH 7.4, 150mM sodium chloride, 0.05% BSA, 0.02% sodium azide and 50% glycerol.
Storage	Store at 4°C short term. Aliquot and store at -20°C long term. Avoid freeze/thaw cycles.

## Protein Information

Name	BCL10 {ECO:0000303   PubMed:9989495, ECO:0000312   HGNC:HGNC:989}
Function	Plays a key role in both adaptive and innate immune signaling by bridging CARD domain-containing proteins to immune activation (PubMed: <a href="#">10187770</a> , PubMed: <a href="#">10364242</a> , PubMed: <a href="#">10400625</a> , PubMed: <a href="#">24074955</a> , PubMed: <a href="#">25365219</a> ). Acts by channeling adaptive and innate immune signaling downstream of CARD domain-containing proteins CARD9, CARD11 and CARD14 to activate NF-kappa-B and MAP kinase p38 (MAPK11, MAPK12, MAPK13 and/or MAPK14) pathways which stimulate expression of genes encoding pro-inflammatory cytokines and chemokines (PubMed: <a href="#">24074955</a> ). Recruited by activated CARD domain-containing proteins: homooligomerized CARD domain-containing proteins form a nucleating helical template that recruits BCL10 via CARD-CARD interaction, thereby promoting polymerization of BCL10, subsequent recruitment of MALT1 and formation of a CBM complex (PubMed: <a href="#">24074955</a> ). This leads to activation of NF-kappa-B and MAP kinase p38 (MAPK11, MAPK12, MAPK13 and/or MAPK14) pathways which stimulate

expression of genes encoding pro-inflammatory cytokines and chemokines (PubMed:[18287044](#), PubMed:[24074955](#), PubMed:[27777308](#)). Activated by CARD9 downstream of C-type lectin receptors; CARD9-mediated signals are essential for antifungal immunity (PubMed:[26488816](#)). Activated by CARD11 downstream of T-cell receptor (TCR) and B-cell receptor (BCR) (PubMed:[18264101](#), PubMed:[18287044](#), PubMed:[24074955](#), PubMed:[27777308](#)). Promotes apoptosis, pro-caspase-9 maturation and activation of NF-kappa-B via NIK and IKK (PubMed:[10187815](#)).

#### Cellular Location

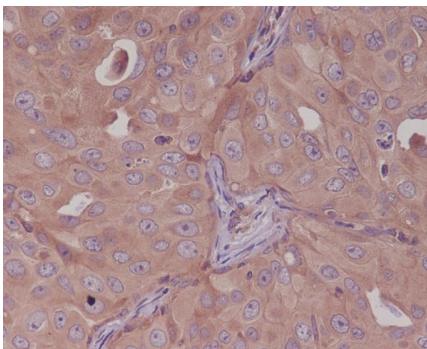
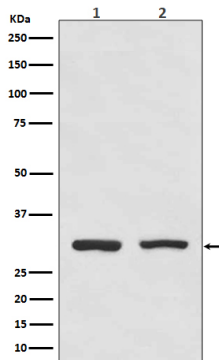
Cytoplasm, perinuclear region. Membrane raft. Note=Appears to have a perinuclear, compact and filamentous pattern of expression. Also found in the nucleus of several types of tumor cells. Colocalized with DPP4 in membrane rafts.

#### Tissue Location

Ubiquitous..

## Images

---



Please note: All products are 'FOR RESEARCH USE ONLY. NOT FOR USE IN DIAGNOSTIC OR THERAPEUTIC PROCEDURES'.