

# FKBP1A Antibody (N-term)

Purified Rabbit Polyclonal Antibody (Pab)

Catalog # AP7756a

## Product Information

---

<b>Application</b>	WB, IHC-P, FC, E
<b>Primary Accession</b>	<a href="#">P62942</a>
<b>Other Accession</b>	<a href="#">P62943</a> , <a href="#">P26883</a> , <a href="#">P18203</a>
<b>Reactivity</b>	Human, Rat, Mouse
<b>Predicted</b>	Bovine, Rabbit
<b>Host</b>	Rabbit
<b>Clonality</b>	Polyclonal
<b>Isotype</b>	Rabbit IgG
<b>Clone Names</b>	RB19306
<b>Calculated MW</b>	11951
<b>Antigen Region</b>	1-30

## Additional Information

---

<b>Gene ID</b>	2280
<b>Other Names</b>	Peptidyl-prolyl cis-trans isomerase FKBP1A, PPIase FKBP1A, 12 kDa FK506-binding protein, 12 kDa FKBP, FKBP-12, Calstabin-1, FK506-binding protein 1A, FKBP-1A, Immunophilin FKBP12, Rotamase, FKBP1A, FKBP1, FKBP12
<b>Target/Specificity</b>	This FKBP1A antibody is generated from rabbits immunized with a KLH conjugated synthetic peptide between 1-30 amino acids from the N-terminal region of human FKBP1A.
<b>Dilution</b>	WB~~1:1000 IHC-P~~1:100~500 FC~~1:10~50 E~~Use at an assay dependent concentration.
<b>Format</b>	Purified polyclonal antibody supplied in PBS with 0.05% (V/V) Proclin 300. This antibody is prepared by Saturated Ammonium Sulfate (SAS) precipitation followed by dialysis against PBS.
<b>Storage</b>	Maintain refrigerated at 2-8°C for up to 2 weeks. For long term storage store at -20°C in small aliquots to prevent freeze-thaw cycles.
<b>Precautions</b>	FKBP1A Antibody (N-term) is for research use only and not for use in diagnostic or therapeutic procedures.

## Protein Information

---

<b>Name</b>	FKBP1A
-------------	--------

## Synonyms

FKBP1, FKBP12

## Function

Keeps in an inactive conformation TGFBR1, the TGF-beta type I serine/threonine kinase receptor, preventing TGF-beta receptor activation in absence of ligand. Recruits SMAD7 to ACVR1B which prevents the association of SMAD2 and SMAD3 with the activin receptor complex, thereby blocking the activin signal. May modulate the RYR1 calcium channel activity. PPIases accelerate the folding of proteins. It catalyzes the cis-trans isomerization of proline imidic peptide bonds in oligopeptides.

## Cellular Location

Cytoplasm, cytosol. Sarcoplasmic reticulum membrane {ECO:0000250|UniProtKB:P62943}; Peripheral membrane protein {ECO:0000250|UniProtKB:P62943}; Cytoplasmic side {ECO:0000250|UniProtKB:P62943}

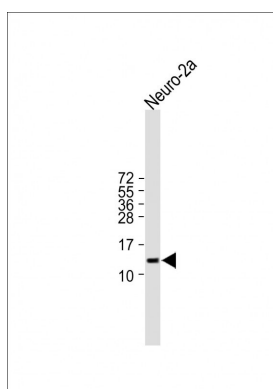
## Background

FKBP12 is a member of the immunophilin protein family, which play a role in immunoregulation and basic cellular processes involving protein folding and trafficking. The protein is a cis-trans prolyl isomerase that binds the immunosuppressants FK506 and rapamycin. It interacts with several intracellular signal transduction proteins including type I TGF-beta receptor. It also interacts with multiple intracellular calcium release channels, and coordinates multi-protein complex formation of the tetrameric skeletal muscle ryanodine receptor. In mouse, deletion of this homologous gene causes congenital heart disorder known as noncompaction of left ventricular myocardium.

## References

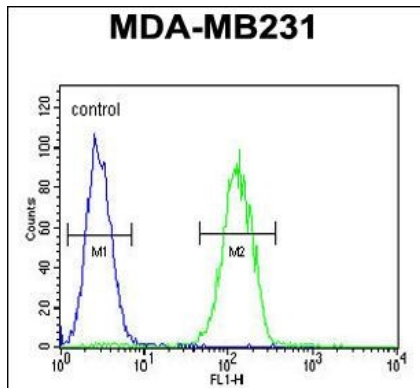
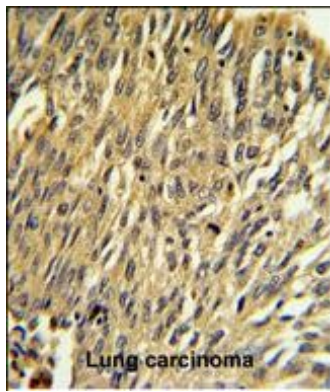
Gerard,M., J. Neurochem. 106 (1), 121-133 (2008)  
Shor,B., Cancer Res. 68 (8), 2934-2943 (2008)  
Jayaraman,T.,J. Biol. Chem. 267 (14), 9474-9477 (1992)

## Images



All lanes : Anti-FKBP1A Antibody (N-term) at 1:1000 dilution Lane 1: Neuro-2a whole cell lysate  
Lysates/proteins at 20 µg per lane. Secondary Goat Anti-Rabbit IgG, (H+L), Peroxidase conjugated (ASP1615) at 1/15000 dilution. Observed band size : 13kDa  
Blocking/Dilution buffer: 5% NFDm/TBST.

FKBP1A Antibody (N-term) (Cat.# AP7756a) IHC analysis in formalin fixed and paraffin embedded human Lung carcinoma followed by peroxidase conjugation of the secondary antibody and DAB staining. This data demonstrates the use of the FKBP1A Antibody (N-term) for immunohistochemistry. Clinical relevance has not been evaluated.



FKBP1A Antibody (N-term) (Cat. #AP7756a) flow cytometric analysis of MDA-MB231 cells (right histogram) compared to a negative control cell (left histogram). FITC-conjugated goat-anti-rabbit secondary antibodies were used for the analysis.

Please note: All products are 'FOR RESEARCH USE ONLY. NOT FOR USE IN DIAGNOSTIC OR THERAPEUTIC PROCEDURES'.