

# CDC25B Rabbit mAb

Catalog # AP77570

## Product Information

---

<b>Application</b>	WB, IP
<b>Primary Accession</b>	<a href="#">P30305</a>
<b>Reactivity</b>	Human
<b>Host</b>	Rabbit
<b>Clonality</b>	Monoclonal Antibody
<b>Isotype</b>	IgG
<b>Conjugate</b>	Unconjugated
<b>Immunogen</b>	A synthesized peptide derived from human Cdc25B
<b>Purification</b>	Affinity Chromatography
<b>Calculated MW</b>	64987

## Additional Information

---

<b>Gene ID</b>	994
<b>Other Names</b>	CDC25B
<b>Dilution</b>	WB~~1/500-1/1000 IP~~N/A
<b>Format</b>	Liquid in 10mM PBS, pH 7.4, 150mM sodium chloride, 0.05% BSA, 0.02% sodium azide and 50% glycerol.
<b>Storage</b>	Store at 4°C short term. Aliquot and store at -20°C long term. Avoid freeze/thaw cycles.

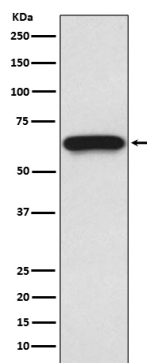
## Protein Information

---

<b>Name</b>	CDC25B
<b>Synonyms</b>	CDC25HU2
<b>Function</b>	Tyrosine protein phosphatase which functions as a dosage- dependent inducer of mitotic progression (PubMed: <a href="#">1836978</a> , PubMed: <a href="#">20360007</a> ). Directly dephosphorylates CDK1 and stimulates its kinase activity (PubMed: <a href="#">20360007</a> ). Required for G2/M phases of the cell cycle progression and abscission during cytokinesis in a ECT2-dependent manner (PubMed: <a href="#">17332740</a> ). The three isoforms seem to have a different level of activity (PubMed: <a href="#">1836978</a> ).
<b>Cellular Location</b>	Cytoplasm, cytoskeleton, microtubule organizing center, centrosome. Cytoplasm, cytoskeleton, spindle pole

## Images

---



Please note: All products are 'FOR RESEARCH USE ONLY. NOT FOR USE IN DIAGNOSTIC OR THERAPEUTIC PROCEDURES'.