

CDC45 Rabbit mAb

Catalog # AP77571

Product Information

Application	WB, IHC-P, IF, FC, ICC
Primary Accession	O75419
Reactivity	Rat, Human, Mouse
Host	Rabbit
Clonality	Monoclonal Antibody
Isotype	IgG
Conjugate	Unconjugated
Immunogen	A synthesized peptide derived from human CDC45
Purification	Affinity Chromatography
Calculated MW	65569

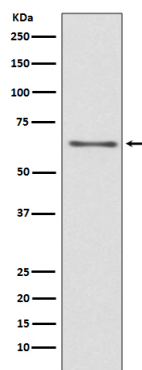
Additional Information

Gene ID	8318
Other Names	CDC45
Dilution	WB~~1/500-1/1000 IHC-P~~N/A IF~~1:50~200 FC~~1:10~50 ICC~~N/A
Format	Liquid in 10mM PBS, pH 7.4, 150mM sodium chloride, 0.05% BSA, 0.02% sodium azide and 50% glycerol.
Storage	Store at 4°C short term. Aliquot and store at -20°C long term. Avoid freeze/thaw cycles.

Protein Information

Name	CDC45 (HGNC:1739)
Synonyms	CDC45L, CDC45L2
Function	Required for initiation of chromosomal DNA replication. Core component of CDC45-MCM-GINS (CMG) helicase, the molecular machine that unwinds template DNA during replication, and around which the replisome is built.
Cellular Location	Nucleus. Chromosome. Note=Associates with chromatin
Tissue Location	Widely expressed, highest levels are found in adult testis and thymus and in fetal liver

Images



Please note: All products are 'FOR RESEARCH USE ONLY. NOT FOR USE IN DIAGNOSTIC OR THERAPEUTIC PROCEDURES'.