

APC6 Rabbit mAb

Catalog # AP77575

Product Information

Application	WB, IF, ICC
Primary Accession	Q13042
Reactivity	Rat, Human, Mouse
Host	Rabbit
Clonality	Monoclonal Antibody
Isotype	IgG
Conjugate	Unconjugated
Immunogen	A synthesized peptide derived from human Cdc16/APC6
Purification	Affinity Chromatography
Calculated MW	71656

Additional Information

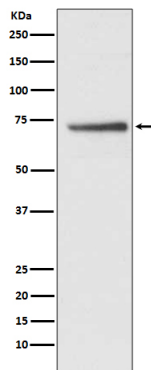
Gene ID	8881
Other Names	CDC16
Dilution	WB~~1/500-1/1000 IF~~1:50~200 ICC~~N/A
Format	Liquid in 10mM PBS, pH 7.4, 150mM sodium chloride, 0.05% BSA, 0.02% sodium azide and 50% glycerol.
Storage	Store at 4°C short term. Aliquot and store at -20°C long term. Avoid freeze/thaw cycles.

Protein Information

Name	CDC16
Synonyms	ANAPC6
Function	Component of the anaphase promoting complex/cyclosome (APC/C), a cell cycle-regulated E3 ubiquitin ligase that controls progression through mitosis and the G1 phase of the cell cycle (PubMed: 18485873). The APC/C complex acts by mediating ubiquitination and subsequent degradation of target proteins: it mainly mediates the formation of 'Lys-11'-linked polyubiquitin chains and, to a lower extent, the formation of 'Lys-48'- and 'Lys-63'-linked polyubiquitin chains (PubMed: 18485873). The APC/C complex catalyzes assembly of branched 'Lys-11'-/'Lys-48'-linked branched ubiquitin chains on target proteins (PubMed: 29033132).
Cellular Location	Cytoplasm, cytoskeleton, microtubule organizing center, centrosome. Cytoplasm, cytoskeleton, spindle. Note=Colocalizes with CDC27 to the

centrosome at all stages of the cell cycle and to the mitotic spindle.

Images



Please note: All products are 'FOR RESEARCH USE ONLY. NOT FOR USE IN DIAGNOSTIC OR THERAPEUTIC PROCEDURES'.