

CDC40 Rabbit mAb

Catalog # AP77576

Product Information

Application	WB, IHC-P, IF, FC, ICC
Primary Accession	O60508
Reactivity	Rat, Human, Mouse
Host	Rabbit
Clonality	Monoclonal Antibody
Isotype	IgG
Conjugate	Unconjugated
Immunogen	A synthesized peptide derived from human CDC40
Purification	Affinity Chromatography
Calculated MW	65521

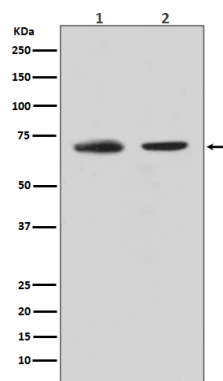
Additional Information

Gene ID	51362
Other Names	CDC40
Dilution	WB~~1/500-1/1000 IHC-P~~N/A IF~~1:50~200 FC~~1:10~50 ICC~~N/A
Format	Liquid in 10mM PBS, pH 7.4, 150mM sodium chloride, 0.05% BSA, 0.02% sodium azide and 50% glycerol.
Storage	Store at 4°C short term. Aliquot and store at -20°C long term. Avoid freeze/thaw cycles.

Protein Information

Name	CDC40
Synonyms	EHB3, PRP17, PRPF17
Function	Required for pre-mRNA splicing as component of the activated spliceosome (PubMed: 33220177). Plays an important role in embryonic brain development; this function does not require proline isomerization (PubMed: 33220177).
Cellular Location	Nucleus. Nucleus speckle

Images



Please note: All products are 'FOR RESEARCH USE ONLY. NOT FOR USE IN DIAGNOSTIC OR THERAPEUTIC PROCEDURES'.