

mGluR1 Rabbit mAb

Catalog # AP77593

Product Information

Application	WB
Primary Accession	Q13255
Reactivity	Rat, Human, Mouse
Host	Rabbit
Clonality	Monoclonal Antibody
Isotype	IgG
Conjugate	Unconjugated
Immunogen	A synthesized peptide derived from human mGluR1
Purification	Affinity Chromatography
Calculated MW	132357

Additional Information

Gene ID	2911
Other Names	GRM1
Dilution	WB~~1/500-1/1000
Format	Liquid in 10mM PBS, pH 7.4, 150mM sodium chloride, 0.05% BSA, 0.02% sodium azide and 50% glycerol.
Storage	Store at 4°C short term. Aliquot and store at -20°C long term. Avoid freeze/thaw cycles.

Protein Information

Name	GRM1
Synonyms	GPRC1A, MGLUR1
Function	G-protein coupled receptor for glutamate. Ligand binding causes a conformation change that triggers signaling via guanine nucleotide-binding proteins (G proteins) and modulates the activity of down-stream effectors. Signaling activates a phosphatidylinositol- calcium second messenger system. May participate in the central action of glutamate in the CNS, such as long-term potentiation in the hippocampus and long-term depression in the cerebellum (PubMed: 24603153 , PubMed: 28886343 , PubMed: 7476890). May function in the light response in the retina (By similarity). Induces GRID1 and GRID2 cation-channel activation via GNAQ-PLC-PKC pathway in dopaminergic neurons and cerebellar Purkinje cell, respectively (PubMed: 24357660 , PubMed: 27276689).

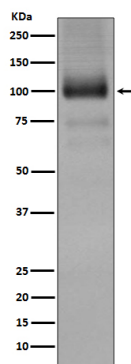
Cellular Location

Cell membrane; Multi-pass membrane protein. Postsynaptic cell membrane; Multi-pass membrane protein. Cell projection, dendrite {ECO:0000250|UniProtKB:P97772}. Note=Located in dendrioles, small dendrites that makes up a brush structure found as the terminal specialization of a dendrite of a unipolar brush cell {ECO:0000250|UniProtKB:P97772}

Tissue Location

Detected in brain..

Images



Please note: All products are 'FOR RESEARCH USE ONLY. NOT FOR USE IN DIAGNOSTIC OR THERAPEUTIC PROCEDURES'.