

# T Box Brain Protein 1 Rabbit mAb

Catalog # AP77610

## Product Information

---

<b>Application</b>	WB
<b>Primary Accession</b>	<a href="#">Q16650</a>
<b>Reactivity</b>	Rat, Human, Mouse
<b>Host</b>	Rabbit
<b>Clonality</b>	Monoclonal Antibody
<b>Isotype</b>	IgG
<b>Conjugate</b>	Unconjugated
<b>Immunogen</b>	A synthesized peptide derived from human TBR1
<b>Purification</b>	Affinity Chromatography
<b>Calculated MW</b>	74053

## Additional Information

---

<b>Gene ID</b>	10716
<b>Other Names</b>	TBR1
<b>Dilution</b>	WB~~1/500-1/1000
<b>Format</b>	Liquid in 10mM PBS, pH 7.4, 150mM sodium chloride, 0.05% BSA, 0.02% sodium azide and 50% glycerol.
<b>Storage</b>	Store at 4°C short term. Aliquot and store at -20°C long term. Avoid freeze/thaw cycles.

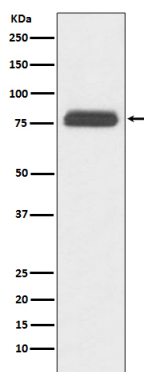
## Protein Information

---

<b>Name</b>	TBR1
<b>Function</b>	Transcriptional repressor involved in multiple aspects of cortical development, including neuronal migration, laminar and areal identity, and axonal projection (PubMed: <a href="#">25232744</a> , PubMed: <a href="#">30250039</a> ). As transcriptional repressor of FEZF2, it blocks the formation of the corticospinal (CS) tract from layer 6 projection neurons, thereby restricting the origin of CS axons specifically to layer 5 neurons (By similarity).
<b>Cellular Location</b>	Nucleus
<b>Tissue Location</b>	Brain.

## Images

---



Please note: All products are 'FOR RESEARCH USE ONLY. NOT FOR USE IN DIAGNOSTIC OR THERAPEUTIC PROCEDURES'.