

alpha 1-Antitrypsin Rabbit mAb

Catalog # AP77611

Product Information

Application	WB, IHC-P, IF, ICC, IP
Primary Accession	P01009
Reactivity	Human
Host	Rabbit
Clonality	Monoclonal Antibody
Isotype	IgG
Conjugate	Unconjugated
Immunogen	A synthesized peptide derived from human SERPINA1
Purification	Affinity Chromatography
Calculated MW	46737

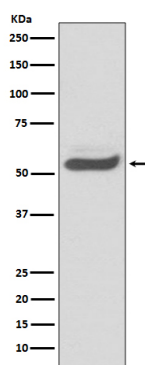
Additional Information

Gene ID	5265
Other Names	SERPINA1
Dilution	WB~~1/500-1/1000 IHC-P~~N/A IF~~1:50~200 ICC~~N/A IP~~N/A
Format	Liquid in 10mM PBS, pH 7.4, 150mM sodium chloride, 0.05% BSA, 0.02% sodium azide and 50% glycerol.
Storage	Store at 4°C short term. Aliquot and store at -20°C long term. Avoid freeze/thaw cycles.

Protein Information

Name	SERPINA1 (HGNC:8941)
Synonyms	AAT, PI
Function	Inhibitor of serine proteases. Its primary target is elastase, but it also has a moderate affinity for plasmin and thrombin. Irreversibly inhibits trypsin, chymotrypsin and plasminogen activator. The aberrant form inhibits insulin-induced NO synthesis in platelets, decreases coagulation time and has proteolytic activity against insulin and plasmin.
Cellular Location	Secreted. Endoplasmic reticulum. Note=The S and Z allele are not secreted effectively and accumulate intracellularly in the endoplasmic reticulum
Tissue Location	Ubiquitous. Expressed in leukocytes and plasma.

Images



Please note: All products are 'FOR RESEARCH USE ONLY. NOT FOR USE IN DIAGNOSTIC OR THERAPEUTIC PROCEDURES'.