

TERF1 Rabbit mAb

Catalog # AP77625

Product Information

| | |
|--------------------------|---|
| Application | WB, IF, ICC |
| Primary Accession | P54274 |
| Reactivity | Human, Mouse |
| Host | Rabbit |
| Clonality | Monoclonal Antibody |
| Isotype | IgG |
| Conjugate | Unconjugated |
| Immunogen | A synthesized peptide derived from human TRF1 |
| Purification | Affinity Chromatography |
| Calculated MW | 50246 |

Additional Information

| | |
|--------------------|--|
| Gene ID | 7013 |
| Other Names | TERF1 |
| Dilution | WB~~1/500-1/1000 IF~~1:50~200 ICC~~N/A |
| Format | Liquid in 10mM PBS, pH 7.4, 150mM sodium chloride, 0.05% BSA, 0.02% sodium azide and 50% glycerol. |
| Storage | Store at 4°C short term. Aliquot and store at -20°C long term. Avoid freeze/thaw cycles. |

Protein Information

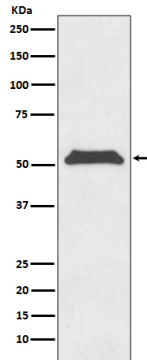
| | |
|--------------------------|--|
| Name | TERF1 |
| Synonyms | PIN2, TRBF1, TRF, TRF1 |
| Function | Binds the telomeric double-stranded 5'-TTAGGG-3' repeat and negatively regulates telomere length. Involved in the regulation of the mitotic spindle. Component of the shelterin complex (telosome) that is involved in the regulation of telomere length and protection. Shelterin associates with arrays of double-stranded 5'-TTAGGG-3' repeats added by telomerase and protects chromosome ends; without its protective activity, telomeres are no longer hidden from the DNA damage surveillance and chromosome ends are inappropriately processed by DNA repair pathways. |
| Cellular Location | Nucleus. Cytoplasm, cytoskeleton, spindle. Chromosome, telomere. Note=Colocalizes with telomeric DNA in interphase and prophase cells. Telomeric localization decreases in metaphase, anaphase and telophase. |

Associates with the mitotic spindle (PubMed:11943150). Colocalizes with TRIOBP isoform 1 at the telomeres in interphase (PubMed:24692559)

Tissue Location

Highly expressed and ubiquitous. Isoform Pin2 predominates

Images



Please note: All products are 'FOR RESEARCH USE ONLY. NOT FOR USE IN DIAGNOSTIC OR THERAPEUTIC PROCEDURES'.