

CD32 Rabbit mAb

Catalog # AP77637

Product Information

Application	WB, IHC-P
Primary Accession	P12318
Reactivity	Human
Host	Rabbit
Clonality	Monoclonal Antibody
Isotype	IgG
Conjugate	Unconjugated
Immunogen	A synthesized peptide derived from human CD32
Purification	Affinity Chromatography
Calculated MW	35001

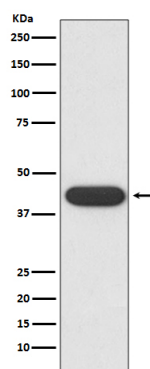
Additional Information

Gene ID	2212
Other Names	FCGR2A
Dilution	WB~~1/500-1/1000 IHC-P~~N/A
Format	Liquid in 10mM PBS, pH 7.4, 150mM sodium chloride, 0.05% BSA, 0.02% sodium azide and 50% glycerol.
Storage	Store at 4°C short term. Aliquot and store at -20°C long term. Avoid freeze/thaw cycles.

Protein Information

Name	FCGR2A
Synonyms	CD32, FCG2, FCGR2A1, IGFR2
Function	Binds to the Fc region of immunoglobulins gamma. Low affinity receptor. By binding to IgG it initiates cellular responses against pathogens and soluble antigens. Promotes phagocytosis of opsonized antigens.
Cellular Location	Cell membrane; Single-pass type I membrane protein
Tissue Location	Found on monocytes, neutrophils and eosinophil platelets

Images



Please note: All products are 'FOR RESEARCH USE ONLY. NOT FOR USE IN DIAGNOSTIC OR THERAPEUTIC PROCEDURES'.