

# Dopamine Receptor D1 Rabbit mAb

Catalog # AP77651

## Product Information

---

<b>Application</b>	WB
<b>Primary Accession</b>	<a href="#">P21728</a>
<b>Reactivity</b>	Rat, Human, Mouse
<b>Host</b>	Rabbit
<b>Clonality</b>	Monoclonal Antibody
<b>Isotype</b>	IgG
<b>Conjugate</b>	Unconjugated
<b>Immunogen</b>	A synthesized peptide derived from human DRD1
<b>Purification</b>	Affinity Chromatography
<b>Calculated MW</b>	49293

## Additional Information

---

<b>Gene ID</b>	1812
<b>Other Names</b>	DRD1
<b>Dilution</b>	WB~~1/500-1/1000
<b>Format</b>	Liquid in 10mM PBS, pH 7.4, 150mM sodium chloride, 0.05% BSA, 0.02% sodium azide and 50% glycerol.
<b>Storage</b>	Store at 4°C short term. Aliquot and store at -20°C long term. Avoid freeze/thaw cycles.

## Protein Information

---

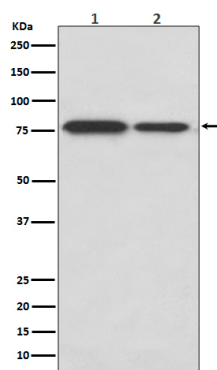
<b>Name</b>	DRD1
<b>Function</b>	Dopamine receptor whose activity is mediated by G proteins which activate adenylyl cyclase. Forms heterotetramers with DRD3 to potentiate beta-arrestin recruitment and mediate locomotor activity.
<b>Cellular Location</b>	Cell membrane {ECO:0000250 UniProtKB:P18901}; Multi-pass membrane protein {ECO:0000250 UniProtKB:P18901}. Endoplasmic reticulum membrane {ECO:0000250 UniProtKB:P18901}; Multi-pass membrane protein {ECO:0000250 UniProtKB:P18901}. Cell projection, cilium membrane; Multi-pass membrane protein. Cell projection, dendrite {ECO:0000250 UniProtKB:Q61616}. Cell projection, dendritic spine {ECO:0000250 UniProtKB:Q61616}. Note=Transport from the endoplasmic reticulum to the cell surface is regulated by interaction with DNAJC14 {ECO:0000250 UniProtKB:P18901}

## Tissue Location

Detected in caudate, nucleus accumbens and in the olfactory tubercle.

## Images

---



Please note: All products are 'FOR RESEARCH USE ONLY. NOT FOR USE IN DIAGNOSTIC OR THERAPEUTIC PROCEDURES'.