

EGF Rabbit mAb

Catalog # AP77671

Product Information

| | |
|--------------------------|--|
| Application | WB, IP |
| Primary Accession | P01133 |
| Reactivity | Human |
| Host | Rabbit |
| Clonality | Monoclonal Antibody |
| Isotype | IgG |
| Conjugate | Unconjugated |
| Immunogen | A synthesized peptide derived from human EGF |
| Purification | Affinity Chromatography |
| Calculated MW | 133994 |

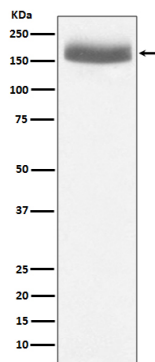
Additional Information

| | |
|--------------------|--|
| Gene ID | 1950 |
| Other Names | EGF |
| Dilution | WB~~1/500-1/1000 IP~~N/A |
| Format | Liquid in 10mM PBS, pH 7.4, 150mM sodium chloride, 0.05% BSA, 0.02% sodium azide and 50% glycerol. |
| Storage | Store at 4°C short term. Aliquot and store at -20°C long term. Avoid freeze/thaw cycles. |

Protein Information

| | |
|--------------------------|--|
| Name | EGF |
| Function | EGF stimulates the growth of various epidermal and epithelial tissues in vivo and in vitro and of some fibroblasts in cell culture. Magnesiotropic hormone that stimulates magnesium reabsorption in the renal distal convoluted tubule via engagement of EGFR and activation of the magnesium channel TRPM6. Can induce neurite outgrowth in motoneurons of the pond snail <i>Lymnaea stagnalis</i> in vitro (PubMed: 10964941). |
| Cellular Location | Membrane; Single-pass type I membrane protein. |
| Tissue Location | Expressed in kidney, salivary gland, cerebrum and prostate. |

Images



Please note: All products are 'FOR RESEARCH USE ONLY. NOT FOR USE IN DIAGNOSTIC OR THERAPEUTIC PROCEDURES'.