

SFRP1 Rabbit mAb

Catalog # AP77678

Product Information

Application	WB, IHC-P, IF, ICC
Primary Accession	Q8N474
Reactivity	Human
Host	Rabbit
Clonality	Monoclonal Antibody
Isotype	IgG
Conjugate	Unconjugated
Immunogen	A synthesized peptide derived from human SFRP1
Purification	Affinity Chromatography
Calculated MW	35386

Additional Information

Gene ID	6422
Other Names	SFRP1
Dilution	WB~~1/500-1/1000 IHC-P~~N/A IF~~1:50~200 ICC~~N/A
Format	Liquid in 10mM PBS, pH 7.4, 150mM sodium chloride, 0.05% BSA, 0.02% sodium azide and 50% glycerol.
Storage	Store at 4°C short term. Aliquot and store at -20°C long term. Avoid freeze/thaw cycles.

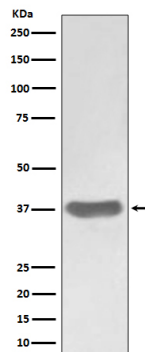
Protein Information

Name	SFRP1
Synonyms	FRP, FRP1, SARP2
Function	Soluble frizzled-related proteins (sFRPS) function as modulators of Wnt signaling through direct interaction with Wnts. They have a role in regulating cell growth and differentiation in specific cell types. SFRP1 decreases intracellular beta-catenin levels (By similarity). Has antiproliferative effects on vascular cells, in vitro and in vivo, and can induce, in vivo, an angiogenic response. In vascular cell cycle, delays the G1 phase and entry into the S phase (By similarity). In kidney development, inhibits tubule formation and bud growth in metanephroi (By similarity). Inhibits WNT1/WNT4-mediated TCF- dependent transcription.
Cellular Location	Secreted. Note=Cell membrane or extracellular matrix-associated. Released by heparin-binding

Tissue Location

Widely expressed. Absent from lung, liver and peripheral blood leukocytes. Highest levels in heart and fetal kidney Also expressed in testis, ovary, fetal brain and lung, leiomyoma cells, myometrial cells and vascular smooth muscle cells. Expressed in foreskin fibroblasts and in keratinocytes

Images



Please note: All products are 'FOR RESEARCH USE ONLY. NOT FOR USE IN DIAGNOSTIC OR THERAPEUTIC PROCEDURES'.