

S100A1 Rabbit mAb

Catalog # AP77683

Product Information

Application	WB, IHC-P, FC, IP
Primary Accession	P23297
Reactivity	Human, Mouse
Host	Rabbit
Clonality	Monoclonal Antibody
Isotype	IgG
Conjugate	Unconjugated
Immunogen	A synthesized peptide derived from human S100
Purification	Affinity Chromatography
Calculated MW	10546

Additional Information

Gene ID	6271
Other Names	S100A1
Dilution	WB~~1/500-1/1000 IHC-P~~N/A FC~~1:10~50 IP~~N/A
Format	Liquid in 10mM PBS, pH 7.4, 150mM sodium chloride, 0.05% BSA, 0.02% sodium azide and 50% glycerol.
Storage	Store at 4°C short term. Aliquot and store at -20°C long term. Avoid freeze/thaw cycles.

Protein Information

Name	S100A1
Synonyms	S100A
Function	Small calcium binding protein that plays important roles in several biological processes such as Ca(2+) homeostasis, chondrocyte biology and cardiomyocyte regulation (PubMed: 12804600). In response to an increase in intracellular Ca(2+) levels, binds calcium which triggers conformational changes (PubMed: 23351007). These changes allow interactions with specific target proteins and modulate their activity (PubMed: 22399290). Regulates a network in cardiomyocytes controlling sarcoplasmic reticulum Ca(2+) cycling and mitochondrial function through interaction with the ryanodine receptors RYR1 and RYR2, sarcoplasmic reticulum Ca(2+)-ATPase/ATP2A2 and mitochondrial F1-ATPase (PubMed: 12804600). Facilitates diastolic Ca(2+) dissociation and myofilament mechanics in order to improve relaxation during diastole (PubMed: 11717446).

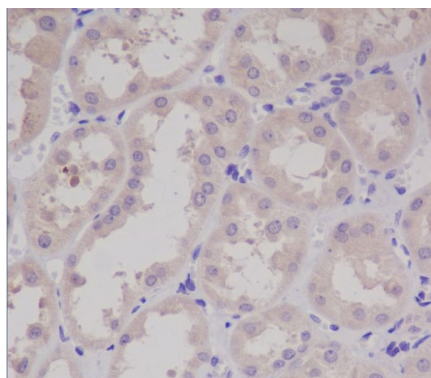
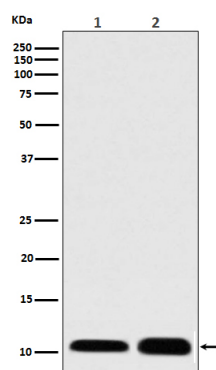
Cellular Location

Cytoplasm. Sarcoplasmic reticulum. Mitochondrion
{ECO:0000250|UniProtKB:P56565}

Tissue Location

Highly prevalent in heart (PubMed:12804600, PubMed:1384693). Also found in lesser quantities in skeletal muscle and brain (PubMed:1384693).

Images



Please note: All products are 'FOR RESEARCH USE ONLY. NOT FOR USE IN DIAGNOSTIC OR THERAPEUTIC PROCEDURES'.