

# CAMKK1 Antibody (N-term)

Purified Rabbit Polyclonal Antibody (Pab)

Catalog # AP7768a

## Product Information

---

<b>Application</b>	WB, E
<b>Primary Accession</b>	<a href="#">Q8N5S9</a>
<b>Reactivity</b>	Human
<b>Host</b>	Rabbit
<b>Clonality</b>	Polyclonal
<b>Isotype</b>	Rabbit IgG
<b>Clone Names</b>	RB16273
<b>Antigen Region</b>	86-121

## Additional Information

---

<b>Other Names</b>	Calcium/calmodulin-dependent protein kinase kinase 1, CaM-KK 1, CaM-kinase kinase 1, CaMKK 1, CaM-kinase IV kinase, Calcium/calmodulin-dependent protein kinase kinase alpha, CaM-KK alpha, CaM-kinase kinase alpha, CaMKK alpha, CAMKK1, CAMKKA
<b>Target/Specificity</b>	This CAMKK1 antibody is generated from rabbits immunized with a KLH conjugated synthetic peptide between 86-121 amino acids from the N-terminal region of human CAMKK1.
<b>Dilution</b>	WB~1:1000 E~Use at an assay dependent concentration.
<b>Format</b>	Purified polyclonal antibody supplied in PBS with 0.09% (W/V) sodium azide. This antibody is prepared by Saturated Ammonium Sulfate (SAS) precipitation followed by dialysis against PBS.
<b>Storage</b>	Maintain refrigerated at 2-8°C for up to 2 weeks. For long term storage store at -20°C in small aliquots to prevent freeze-thaw cycles.
<b>Precautions</b>	CAMKK1 Antibody (N-term) is for research use only and not for use in diagnostic or therapeutic procedures.

## Protein Information

---

### Background

---

CAMKK1 belongs to the Serine/Threonine protein kinase family, and to the Ca(2+)/calmodulin-dependent protein kinase subfamily. This protein plays a role in the calcium/calmodulin-dependent (CaM) kinase cascade.

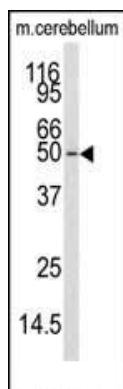
## References

---

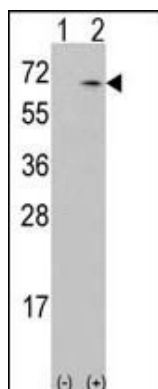
Guest,C.B., PLoS ONE 3 (2), E1606 (2008)  
Rudd,M.F., Genome Res. 16 (6), 693-701 (2006)  
Ishikawa,Y., FEBS Lett. 550 (1-3), 57-63 (2003)  
Matsushita,M., J. Biol. Chem. 274 (15), 10086-10093 (1999)

## Images

---



Western blot analysis of anti-CAMKK1 Antibody (N-term) (Cat.#AP7768a) in mouse cerebellum tissue lysates (35ug/lane). CAMKK1 (arrow) was detected using the purified Pab.



Western blot analysis of CAMKK1 (arrow) using rabbit polyclonal CAMKK1 Antibody (N-term) (Cat.#AP7768a). 293 cell lysates (2 ug/lane) either nontransfected (Lane 1) or transiently transfected with the CAMKK1 gene (Lane 2).

## Citations

---

- [Ca<sup>2+</sup>/Calmodulin-Dependent Protein Kinase Kinases \(CaMKKs\) Effects on AMP-Activated Protein Kinase \(AMPK\) Regulation of Chicken Sperm Functions.](#)

Please note: All products are 'FOR RESEARCH USE ONLY. NOT FOR USE IN DIAGNOSTIC OR THERAPEUTIC PROCEDURES'.