

HEC1 Rabbit mAb

Catalog # AP77708

Product Information

Application	WB, IP
Primary Accession	Q14777
Reactivity	Rat, Human, Mouse
Host	Rabbit
Clonality	Monoclonal Antibody
Isotype	IgG
Conjugate	Unconjugated
Immunogen	A synthesized peptide derived from human HEC1
Purification	Affinity Chromatography
Calculated MW	73913

Additional Information

Gene ID	10403
Other Names	NDC80
Dilution	WB~~1/500-1/1000 IP~~N/A
Format	Liquid in 10mM PBS, pH 7.4, 150mM sodium chloride, 0.05% BSA, 0.02% sodium azide and 50% glycerol.
Storage	Store at 4°C short term. Aliquot and store at -20°C long term. Avoid freeze/thaw cycles.

Protein Information

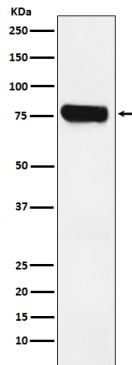
Name	NDC80
Synonyms	HEC, HEC1, KNTC2
Function	Acts as a component of the essential kinetochore-associated NDC80 complex, which is required for chromosome segregation and spindle checkpoint activity (PubMed: 12351790 , PubMed: 14654001 , PubMed: 14699129 , PubMed: 15062103 , PubMed: 15235793 , PubMed: 15239953 , PubMed: 15548592 , PubMed: 16732327 , PubMed: 30409912 , PubMed: 9315664). Required for kinetochore integrity and the organization of stable microtubule binding sites in the outer plate of the kinetochore (PubMed: 15548592 , PubMed: 30409912). The NDC80 complex synergistically enhances the affinity of the SKA1 complex for microtubules and may allow the NDC80 complex to track depolymerizing microtubules (PubMed: 23085020). Plays a role in chromosome congression and is essential for the end-on attachment of the kinetochores to spindle microtubules

(PubMed:[23891108](#), PubMed:[25743205](#)).

Cellular Location

Nucleus. Chromosome, centromere, kinetochore. Note=Localizes to kinetochores from late prophase to anaphase (PubMed:14699129) Localizes specifically to the outer plate of the kinetochore (PubMed:14699129).

Images



Please note: All products are 'FOR RESEARCH USE ONLY. NOT FOR USE IN DIAGNOSTIC OR THERAPEUTIC PROCEDURES'.