

# MTA2 Rabbit mAb

Catalog # AP77714

## Product Information

|                   |   |
|-------------------|---|
| Application       | WB, IHC-P, IF, FC, ICC                        |
| Primary Accession | <a href="#">O94776</a>                        |
| Reactivity        | Human   |
| Host              | Rabbit  |
| Clonality         | Monoclonal Antibody                           |
| Isotype           | IgG   |
| Conjugate         | Unconjugated                                  |
| Immunogen         | A synthesized peptide derived from human MTA2 |
| Purification      | Affinity Chromatography                       |
| Calculated MW     | 75023   |

## Additional Information

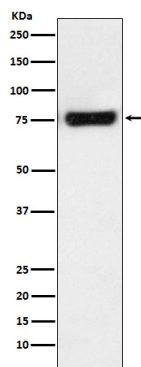
|             |  |
|-------------|--|
| Gene ID     | 9219   |
| Other Names | MTA2   |
| Dilution    | WB~~1/500-1/1000 IHC-P~~N/A IF~~1:50~200 FC~~1:10~50 ICC~~N/A                                      |
| Format      | Liquid in 10mM PBS, pH 7.4, 150mM sodium chloride, 0.05% BSA, 0.02% sodium azide and 50% glycerol. |
| Storage     | Store at 4°C short term. Aliquot and store at -20°C long term. Avoid freeze/thaw cycles.           |

## Protein Information

|                   |   |
|-------------------|---|
| Name              | MTA2  |
| Synonyms          | MTA1L1, PID   |
| Function          | May function as a transcriptional coregulator (PubMed: <a href="#">16428440</a> , PubMed: <a href="#">28977666</a> ). Acts as a component of the histone deacetylase NuRD complex which participates in the remodeling of chromatin (PubMed: <a href="#">16428440</a> , PubMed: <a href="#">28977666</a> ). |
| Cellular Location | Nucleus {ECO:0000255   PROSITE-ProRule:PRU00512, ECO:0000255   PROSITE-ProRule:PRU00624, ECO:0000269   PubMed:28977666, ECO:0000269   PubMed:33283408}  |
| Tissue Location   | Widely expressed.   |

## Images

---



Please note: All products are 'FOR RESEARCH USE ONLY. NOT FOR USE IN DIAGNOSTIC OR THERAPEUTIC PROCEDURES'.