

# Prothrombin Rabbit mAb

Catalog # AP77724

## Product Information

---

<b>Application</b>	WB, IP
<b>Primary Accession</b>	<a href="#">P00734</a>
<b>Reactivity</b>	Human
<b>Host</b>	Rabbit
<b>Clonality</b>	Monoclonal Antibody
<b>Isotype</b>	IgG
<b>Conjugate</b>	Unconjugated
<b>Immunogen</b>	A synthesized peptide derived from human Prothrombin
<b>Purification</b>	Affinity Chromatography
<b>Calculated MW</b>	70037

## Additional Information

---

<b>Gene ID</b>	2147
<b>Other Names</b>	F2
<b>Dilution</b>	WB~~1/500-1/1000 IP~~N/A
<b>Format</b>	Liquid in 10mM PBS, pH 7.4, 150mM sodium chloride, 0.05% BSA, 0.02% sodium azide and 50% glycerol.
<b>Storage</b>	Store at 4°C short term. Aliquot and store at -20°C long term. Avoid freeze/thaw cycles.

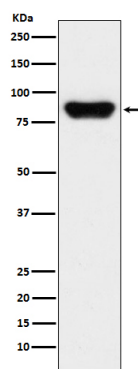
## Protein Information

---

<b>Name</b>	F2
<b>Function</b>	Thrombin, which cleaves bonds after Arg and Lys, converts fibrinogen to fibrin and activates factors V, VII, VIII, XIII, and, in complex with thrombomodulin, protein C. Functions in blood homeostasis, inflammation and wound healing. Activates coagulation factor XI (F11); activation is promoted by the contact with negatively charged surfaces (PubMed: <a href="#">2019570</a> , PubMed: <a href="#">21976677</a> ). Triggers the production of pro- inflammatory cytokines, such as MCP-1/CCL2 and IL8/CXCL8, in endothelial cells (PubMed: <a href="#">30568593</a> , PubMed: <a href="#">9780208</a> ).
<b>Cellular Location</b>	Secreted, extracellular space.
<b>Tissue Location</b>	Expressed by the liver and secreted in plasma.

## Images

---



Please note: All products are 'FOR RESEARCH USE ONLY. NOT FOR USE IN DIAGNOSTIC OR THERAPEUTIC PROCEDURES'.