

EDG2 Rabbit mAb

Catalog # AP77753

Product Information

Application	WB, IHC-P, IF, FC, ICC, IP
Primary Accession	Q92633
Reactivity	Human
Host	Rabbit
Clonality	Monoclonal Antibody
Isotype	IgG
Conjugate	Unconjugated
Immunogen	A synthesized peptide derived from human EDG2
Purification	Affinity Chromatography
Calculated MW	41109

Additional Information

Gene ID	1902
Other Names	LPAR1
Dilution	WB~~1/500-1/1000 IHC-P~~N/A IF~~1:50~200 FC~~1:10~50 ICC~~N/A IP~~N/A
Format	Liquid in 10mM PBS, pH 7.4, 150mM sodium chloride, 0.05% BSA, 0.02% sodium azide and 50% glycerol.
Storage	Store at 4°C short term. Aliquot and store at -20°C long term. Avoid freeze/thaw cycles.

Protein Information

Name	LPAR1
Synonyms	EDG2, LPA1
Function	Receptor for lysophosphatidic acid (LPA) (PubMed: 19306925 , PubMed: 25025571 , PubMed: 26091040 , PubMed: 9070858). Plays a role in the reorganization of the actin cytoskeleton, cell migration, differentiation and proliferation, and thereby contributes to the responses to tissue damage and infectious agents. Activates downstream signaling cascades via the G(i)/G(o), G(12)/G(13), and G(q) families of heteromeric G proteins. Signaling inhibits adenylyl cyclase activity and decreases cellular cAMP levels (PubMed: 26091040). Signaling triggers an increase of cytoplasmic Ca(2+) levels (PubMed: 19656035 , PubMed: 19733258 , PubMed: 26091040). Activates RALA; this leads to the activation of phospholipase C (PLC) and the formation of inositol 1,4,5-trisphosphate (PubMed: 19306925). Signaling mediates

activation of down-stream MAP kinases (By similarity). Contributes to the regulation of cell shape. Promotes Rho-dependent reorganization of the actin cytoskeleton in neuronal cells and neurite retraction (PubMed:[26091040](#)). Promotes the activation of Rho and the formation of actin stress fibers (PubMed:[26091040](#)). Promotes formation of lamellipodia at the leading edge of migrating cells via activation of RAC1 (By similarity). Through its function as LPA receptor, plays a role in chemotaxis and cell migration, including responses to injury and wounding (PubMed:[18066075](#), PubMed:[19656035](#), PubMed:[19733258](#)). Plays a role in triggering inflammation in response to bacterial lipopolysaccharide (LPS) via its interaction with CD14. Promotes cell proliferation in response to LPA (By similarity). Inhibits the intracellular ciliogenesis pathway in response to LPA and through AKT1 activation (PubMed:[31204173](#)). Required for normal skeleton development. May play a role in osteoblast differentiation. Required for normal brain development. Required for normal proliferation, survival and maturation of newly formed neurons in the adult dentate gyrus. Plays a role in pain perception and in the initiation of neuropathic pain (By similarity).

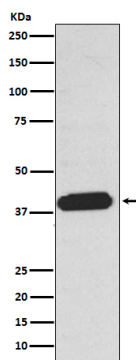
Cellular Location

Cell surface. Cell membrane; Multi-pass membrane protein. Endosome
Note=Prior to LPA treatment found predominantly at the cell surface
Internalized after LPA treatment. Colocalizes with RALA in endocytic vesicles after LPA treatment.

Tissue Location

Expressed in many adult organs, including brain, heart, colon, small intestine, placenta, prostate, ovary, pancreas, testes, spleen, skeletal muscle, and kidney. Little or no expression in liver, lung, thymus, or peripheral blood leukocytes (PubMed:[9070858](#)) Detected in lung fibroblasts from bronchoalveolar fluid from patients with idiopathic pulmonary fibrosis (PubMed:[18066075](#)). Detected in bone marrow-derived mesenchymal stem cells (PubMed:[19733258](#))

Images



Please note: All products are 'FOR RESEARCH USE ONLY. NOT FOR USE IN DIAGNOSTIC OR THERAPEUTIC PROCEDURES'.