

ETS1 Rabbit mAb

Catalog # AP77775

Product Information

Application	WB, FC
Primary Accession	P14921
Reactivity	Human, Mouse
Host	Rabbit
Clonality	Monoclonal Antibody
Isotype	IgG
Conjugate	Unconjugated
Immunogen	A synthesized peptide derived from human ETS1
Purification	Affinity Chromatography
Calculated MW	50408

Additional Information

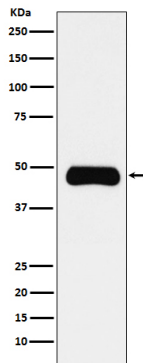
Gene ID	2113
Other Names	ETS1
Dilution	WB~~1/500-1/1000 FC~~1:10~50
Format	Liquid in 10mM PBS, pH 7.4, 150mM sodium chloride, 0.05% BSA, 0.02% sodium azide and 50% glycerol.
Storage	Store at 4°C short term. Aliquot and store at -20°C long term. Avoid freeze/thaw cycles.

Protein Information

Name	ETS1
Synonyms	EWSR2
Function	Transcription factor (PubMed: 10698492 , PubMed: 11909962). Directly controls the expression of cytokine and chemokine genes in a wide variety of different cellular contexts (PubMed: 20378371). May control the differentiation, survival and proliferation of lymphoid cells (PubMed: 20378371). May also regulate angiogenesis through regulation of expression of genes controlling endothelial cell migration and invasion (PubMed: 15247905 , PubMed: 15592518).
Cellular Location	Nucleus. Cytoplasm Note=Delocalizes from nucleus to cytoplasm when coexpressed with isoform Ets-1 p27.
Tissue Location	Highly expressed within lymphoid cells. Isoforms c- ETS-1A and Ets-1 p27 are

both detected in all fetal tissues tested, but vary with tissue type in adult tissues. None is detected in brain or kidney.

Images



Please note: All products are 'FOR RESEARCH USE ONLY. NOT FOR USE IN DIAGNOSTIC OR THERAPEUTIC PROCEDURES'.