

TAX1BP3 Rabbit mAb

Catalog # AP77790

Product Information

Application	WB, IHC-P, FC
Primary Accession	O14907
Reactivity	Rat, Human, Mouse
Host	Rabbit
Clonality	Monoclonal Antibody
Isotype	IgG
Conjugate	Unconjugated
Immunogen	A synthesized peptide derived from human TAX1BP3
Purification	Affinity Chromatography
Calculated MW	13735

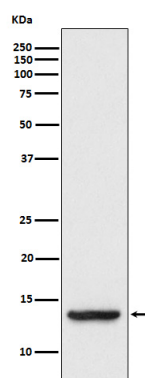
Additional Information

Gene ID	30851
Other Names	TAX1BP3
Dilution	WB~~1/500-1/1000 IHC-P~~N/A FC~~1:10~50
Format	Liquid in 10mM PBS, pH 7.4, 150mM sodium chloride, 0.05% BSA, 0.02% sodium azide and 50% glycerol.
Storage	Store at 4°C short term. Aliquot and store at -20°C long term. Avoid freeze/thaw cycles.

Protein Information

Name	TAX1BP3 (HGNC:30684)
Function	May regulate a number of protein-protein interactions by competing for PDZ domain binding sites. Binds CTNNB1 and may thereby act as an inhibitor of the Wnt signaling pathway. Competes with LIN7A for KCNJ4 binding, and thereby promotes KCNJ4 internalization. May play a role in the Rho signaling pathway. May play a role in activation of CDC42 by the viral protein HPV16 E6.
Cellular Location	Cytoplasm. Nucleus. Cell membrane; Peripheral membrane protein; Cytoplasmic side. Note=Recruited to the cell membrane by interaction with membrane proteins
Tissue Location	Ubiquitous. Detected in brain, heart, kidney, lung, small intestine and skeletal muscle. Detected in various cell lines including HeLa. Weakly expressed in peripheral blood leukocytes

Images



Please note: All products are 'FOR RESEARCH USE ONLY. NOT FOR USE IN DIAGNOSTIC OR THERAPEUTIC PROCEDURES'.