

# Ctip1 Rabbit mAb

Catalog # AP77798

## Product Information

---

<b>Application</b>	WB, IHC-P, IF, FC, ICC
<b>Primary Accession</b>	<a href="#">Q9H165</a>
<b>Reactivity</b>	Rat, Human, Mouse
<b>Host</b>	Rabbit
<b>Clonality</b>	Monoclonal Antibody
<b>Isotype</b>	IgG
<b>Conjugate</b>	Unconjugated
<b>Immunogen</b>	A synthesized peptide derived from human Ctip1
<b>Purification</b>	Affinity Chromatography
<b>Calculated MW</b>	91197

## Additional Information

---

<b>Gene ID</b>	53335
<b>Other Names</b>	BCL11A
<b>Dilution</b>	WB~~1/500-1/1000 IHC-P~~N/A IF~~1:50~200 FC~~1:10~50 ICC~~N/A
<b>Format</b>	Liquid in 10mM PBS, pH 7.4, 150mM sodium chloride, 0.05% BSA, 0.02% sodium azide and 50% glycerol.
<b>Storage</b>	Store at 4°C short term. Aliquot and store at -20°C long term. Avoid freeze/thaw cycles.

## Protein Information

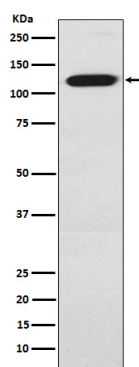
---

<b>Name</b>	BCL11A
<b>Synonyms</b>	CTIP1, EVI9, KIAA1809, ZNF856
<b>Function</b>	Transcription factor (PubMed: <a href="#">16704730</a> , PubMed: <a href="#">29606353</a> ). Associated with the BAF SWI/SNF chromatin remodeling complex (PubMed: <a href="#">23644491</a> , PubMed: <a href="#">39607926</a> ). Binds to the 5'-TGACCA-3' sequence motif in regulatory regions of target genes, including a distal promoter of the HBG1 hemoglobin subunit gamma-1 gene (PubMed: <a href="#">29606353</a> , PubMed: <a href="#">39423807</a> ). Involved in regulation of the developmental switch from gamma- to beta-globin, probably via direct repression of HBG1; hence indirectly repressing fetal hemoglobin (HbF) level (PubMed: <a href="#">26375765</a> , PubMed: <a href="#">29606353</a> , PubMed: <a href="#">39423807</a> , PubMed: <a href="#">39607926</a> ). Involved in brain development (PubMed: <a href="#">27453576</a> ). May play a role in hematopoiesis (By similarity). Essential factor in lymphopoiesis required for B-cell formation in fetal liver (By similarity). May function as a modulator of the transcriptional repression activity of NR2F2 (By similarity).

<b>Cellular Location</b>	Cytoplasm. Nucleus. Chromosome. Note=Associates with the nuclear body Colocalizes with SUMO1 and SENP2 in nuclear speckles (By similarity) [Isoform 2]: Cytoplasm. Nucleus Note=Predominantly localized in the nucleus in nuclear paraspeckles
<b>Tissue Location</b>	Expressed at high levels in brain, spleen thymus, bone marrow and testis. Expressed in CD34-positive myeloid precursor cells, B-cells, monocytes and megakaryocytes. Expression is tightly regulated during B-cell development.

## Images

---



Please note: All products are 'FOR RESEARCH USE ONLY. NOT FOR USE IN DIAGNOSTIC OR THERAPEUTIC PROCEDURES'.