

MYBBP1A Rabbit mAb

Catalog # AP77805

Product Information

Application	WB, IHC-P, IF, FC, ICC
Primary Accession	Q9BQG0
Reactivity	Human
Host	Rabbit
Clonality	Monoclonal Antibody
Isotype	IgG
Conjugate	Unconjugated
Immunogen	A synthesized peptide derived from human MYBBP1A
Purification	Affinity Chromatography
Calculated MW	148855

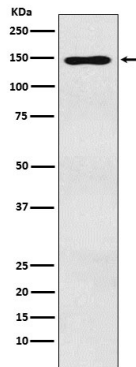
Additional Information

Gene ID	10514
Other Names	MYBBP1A
Dilution	WB~~1/500-1/1000 IHC-P~~N/A IF~~1:50~200 FC~~1:10~50 ICC~~N/A
Format	Liquid in 10mM PBS, pH 7.4, 150mM sodium chloride, 0.05% BSA, 0.02% sodium azide and 50% glycerol.
Storage	Store at 4°C short term. Aliquot and store at -20°C long term. Avoid freeze/thaw cycles.

Protein Information

Name	MYBBP1A
Synonyms	P160
Function	May activate or repress transcription via interactions with sequence specific DNA-binding proteins (By similarity). Repression may be mediated at least in part by histone deacetylase activity (HDAC activity) (By similarity). Acts as a corepressor and in concert with CRY1, represses the transcription of the core circadian clock component PER2 (By similarity). Preferentially binds to dimethylated histone H3 'Lys-9' (H3K9me2) on the PER2 promoter (By similarity). Has a role in rRNA biogenesis together with PWP1 (PubMed: 29065309).
Cellular Location	Cytoplasm. Nucleus. Nucleus, nucleolus. Note=Shuttles between the nucleus and cytoplasm. Nuclear import may be mediated by KPNA2, while export appears to depend partially on XPO1/CRM1 (By similarity). Predominantly

Images



Please note: All products are 'FOR RESEARCH USE ONLY. NOT FOR USE IN DIAGNOSTIC OR THERAPEUTIC PROCEDURES'.