

Inhibin alpha Rabbit mAb

Catalog # AP77811

Product Information

Application	WB, FC
Primary Accession	P05111
Reactivity	Rat, Human, Mouse
Host	Rabbit
Clonality	Monoclonal Antibody
Isotype	IgG
Conjugate	Unconjugated
Immunogen	A synthesized peptide derived from human Inhibin alpha
Purification	Affinity Chromatography
Calculated MW	39670

Additional Information

Gene ID	3623
Other Names	INHA
Dilution	WB~~1/500-1/1000 FC~~1:10~50
Format	Liquid in 10mM PBS, pH 7.4, 150mM sodium chloride, 0.05% BSA, 0.02% sodium azide and 50% glycerol.
Storage	Store at 4°C short term. Aliquot and store at -20°C long term. Avoid freeze/thaw cycles.

Protein Information

Name	INHA
Function	Inhibins and activins inhibit and activate, respectively, the secretion of follitropin by the pituitary gland. Inhibins/activins are involved in regulating a number of diverse functions such as hypothalamic and pituitary hormone secretion, gonadal hormone secretion, germ cell development and maturation, erythroid differentiation, insulin secretion, nerve cell survival, embryonic axial development or bone growth, depending on their subunit composition. Inhibins appear to oppose the functions of activins. Inhibin B is a dimer of alpha and beta-B that plays a crucial role in the regulation of the reproductive system by inhibiting the secretion of follicle-stimulating hormone (FSH) from the anterior pituitary gland. Thereby, maintains reproductive homeostasis in both males and females. Acts as a more potent suppressor of FSH release than inhibin A (By similarity). Functions as competitive receptor antagonist binding activin type II receptors with high affinity in the presence of the TGF-beta type III coreceptor/TGFBR3L

(PubMed:[34910520](#)).

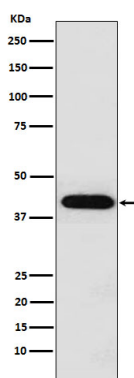
Cellular Location

Secreted {ECO:0000250 | UniProtKB:P17490}.

Tissue Location

Originally found in ovary (granulosa cells) and testis (Sertoli cells), but widely distributed in many tissues including brain and placenta. In adrenal cortex expression is limited to the zona reticularis and the innermost zona fasciculata in the normal gland, extending centripetally into the zona fasciculata in hyperplasia. Also found in adrenocortical tumors. Also expressed in prostate epithelium of benign prostatic hyperplasia, in regions of basal cell hyperplasia and in nonmalignant regions of high grade prostate cancer. Only circulating inhibin B is found in male, whereas circulating inhibins A and B are found in female

Images



Please note: All products are 'FOR RESEARCH USE ONLY. NOT FOR USE IN DIAGNOSTIC OR THERAPEUTIC PROCEDURES'.