

# IL-23 alpha Rabbit mAb

Catalog # AP77832

## Product Information

---

<b>Application</b>	WB
<b>Primary Accession</b>	<a href="#">Q9NPF7</a>
<b>Reactivity</b>	Human
<b>Host</b>	Rabbit
<b>Clonality</b>	Monoclonal Antibody
<b>Isotype</b>	IgG
<b>Conjugate</b>	Unconjugated
<b>Immunogen</b>	A synthesized peptide derived from human IL23
<b>Purification</b>	Affinity Chromatography
<b>Calculated MW</b>	20730

## Additional Information

---

<b>Gene ID</b>	51561
<b>Other Names</b>	IL23A
<b>Dilution</b>	WB~~1/500-1/1000
<b>Format</b>	Liquid in 10mM PBS, pH 7.4, 150mM sodium chloride, 0.05% BSA, 0.02% sodium azide and 50% glycerol.
<b>Storage</b>	Store at 4°C short term. Aliquot and store at -20°C long term. Avoid freeze/thaw cycles.

## Protein Information

---

<b>Name</b>	IL23A
<b>Synonyms</b>	SGRF
<b>Function</b>	Associates with IL12B to form the pro-inflammatory cytokine IL-23 that plays different roles in innate and adaptive immunity (PubMed: <a href="#">11114383</a> ). Released by antigen-presenting cells such as dendritic cells or macrophages, binds to a heterodimeric receptor complex composed of IL12RB1 and IL23R to activate JAK2 and TYK2 which then phosphorylate the receptor to form a docking site leading to the phosphorylation of STAT3 and STAT4 (PubMed: <a href="#">29287995</a> , PubMed: <a href="#">32474165</a> , PubMed: <a href="#">33606986</a> ). This process leads to activation of several pathways including p38 MAPK or NF-kappa-B and promotes the production of pro- inflammatory cytokines such as interleukin-17A/IL17A (PubMed: <a href="#">12023369</a> ). In turn, participates in the early and effective intracellular bacterial clearance (PubMed: <a href="#">32474165</a> ). Promotes the expansion and survival of T-helper 17 cells, a CD4-positive helper T-cell subset that

produces IL-17, as well as other IL-17-producing cells (PubMed:[17676044](#)).

**Cellular Location**

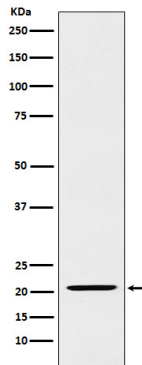
Secreted. Note=Secreted upon association with IL12B

**Tissue Location**

Secreted by activated dendritic and phagocytic cells and keratinocytes. Also expressed by dermal Langerhans cells (at protein level).

## Images

---



Please note: All products are 'FOR RESEARCH USE ONLY. NOT FOR USE IN DIAGNOSTIC OR THERAPEUTIC PROCEDURES'.