

VPS26 Rabbit mAb

Catalog # AP77869

Product Information

Application	WB, IF, ICC, IP
Primary Accession	O75436
Reactivity	Rat, Human, Mouse
Host	Rabbit
Clonality	Monoclonal Antibody
Isotype	IgG
Conjugate	Unconjugated
Immunogen	A synthesized peptide derived from human VPS26
Purification	Affinity Chromatography
Calculated MW	38170

Additional Information

Gene ID	9559
Other Names	VPS26A
Dilution	WB~~1/500-1/1000 IF~~1:50~200 ICC~~N/A IP~~N/A
Format	Liquid in 10mM PBS, pH 7.4, 150mM sodium chloride, 0.05% BSA, 0.02% sodium azide and 50% glycerol.
Storage	Store at 4°C short term. Aliquot and store at -20°C long term. Avoid freeze/thaw cycles.

Protein Information

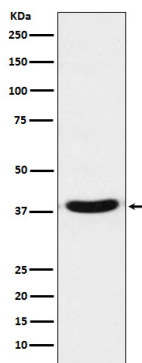
Name	VPS26A {ECO:0000303 PubMed:30213940, ECO:0000312 HGNC:HGNC:12711}
Function	Acts as a component of the retromer cargo-selective complex (CSC). The CSC is believed to be the core functional component of retromer or respective retromer complex variants acting to prevent missorting of selected transmembrane cargo proteins into the lysosomal degradation pathway. The recruitment of the CSC to the endosomal membrane involves RAB7A and SNX3. The SNX-BAR retromer mediates retrograde transport of cargo proteins from endosomes to the trans- Golgi network (TGN) and is involved in endosome-to-plasma membrane transport for cargo protein recycling. The SNX3-retromer mediates the retrograde endosome-to-TGN transport of WLS distinct from the SNX-BAR retromer pathway. The SNX27-retromer is believed to be involved in endosome-to-plasma membrane trafficking and recycling of a broad spectrum of cargo proteins (Probable). The CSC seems to act as recruitment hub for other proteins, such as the WASH complex and TBC1D5

(Probable). Required for retrograde transport of lysosomal enzyme receptor IGF2R (PubMed:[15078902](#), PubMed:[15078903](#)). Required to regulate transcytosis of the polymeric immunoglobulin receptor (pIgR-pIgA) (PubMed:[15247922](#)). Required for the endosomal localization of WASHC2A (indicative for the WASH complex) (PubMed:[22070227](#)). Required for the endosomal localization of TBC1D5 (PubMed:[20923837](#)). Mediates retromer cargo recognition of SORL1 and is involved in trafficking of SORL1 implicated in sorting and processing of APP (PubMed:[22279231](#)). Involved in retromer-independent lysosomal sorting of F2R (PubMed:[16407403](#)). Involved in recycling of ADRB2 (PubMed:[21602791](#)). Enhances the affinity of SNX27 for PDZ-binding motifs in cargo proteins (By similarity).

Cellular Location

Cytoplasm. Endosome membrane; Peripheral membrane protein {ECO:0000250|UniProtKB:P40336}. Early endosome Note=Localizes to tubular profiles adjacent to endosomes (PubMed:15078903). Predominantly found in early not late endosomes (By similarity). {ECO:0000250|UniProtKB:P40336}

Images



Please note: All products are 'FOR RESEARCH USE ONLY. NOT FOR USE IN DIAGNOSTIC OR THERAPEUTIC PROCEDURES'.