

# Gelsolin Rabbit mAb

Catalog # AP77879

## Product Information

---

<b>Application</b>	WB, IHC-P, IF, FC, ICC
<b>Primary Accession</b>	<a href="#">P06396</a>
<b>Reactivity</b>	Human, Mouse
<b>Host</b>	Rabbit
<b>Clonality</b>	Monoclonal Antibody
<b>Isotype</b>	IgG
<b>Conjugate</b>	Unconjugated
<b>Immunogen</b>	A synthesized peptide derived from human Gelsolin
<b>Purification</b>	Affinity Chromatography
<b>Calculated MW</b>	85698

## Additional Information

---

<b>Gene ID</b>	2934
<b>Other Names</b>	GSN
<b>Dilution</b>	WB~~1/500-1/1000 IHC-P~~N/A IF~~1:50~200 FC~~1:10~50 ICC~~N/A
<b>Format</b>	Liquid in 10mM PBS, pH 7.4, 150mM sodium chloride, 0.05% BSA, 0.02% sodium azide and 50% glycerol.
<b>Storage</b>	Store at 4°C short term. Aliquot and store at -20°C long term. Avoid freeze/thaw cycles.

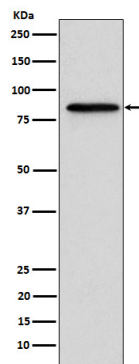
## Protein Information

---

<b>Name</b>	GSN
<b>Function</b>	Calcium-regulated, actin-modulating protein that binds to the plus (or barbed) ends of actin monomers or filaments, preventing monomer exchange (end-blocking or capping). It can promote the assembly of monomers into filaments (nucleation) as well as sever filaments already formed (PubMed: <a href="#">19666512</a> ). Plays a role in ciliogenesis (PubMed: <a href="#">20393563</a> ).
<b>Cellular Location</b>	[Isoform 2]: Cytoplasm, cytoskeleton.
<b>Tissue Location</b>	Phagocytic cells, platelets, fibroblasts, nonmuscle cells, smooth and skeletal muscle cells

## Images

---



Please note: All products are 'FOR RESEARCH USE ONLY. NOT FOR USE IN DIAGNOSTIC OR THERAPEUTIC PROCEDURES'.